

PERFORMANCE DATA SHEET

3236

Monoclonal anti-human CD152 (CTLA-4)/APC*

mAb name/Clone: ANC152.2/8H5

Isotype: Mouse IgG1 κ

Immunogen: Stimulated human PBL's and human CD152 Ig fusion protei

CATALOG#: 359-060

QUANTITY: 120 tests

VOLUME IN VIAL: 0.2 ml

WORKING DILUTION: 1:50 (or use 1.6 μ l of concentrated stock per 5 x 10⁵-cell test)

INFORMATION: Human CD152 (CTLA-4) is a cell surface glycoprotein expressed at low levels on activated T cells. CD152 is a high affinity receptor for the costimulatory molecules CD80 (B7-1) and CD86 (B7-2) and appears to function as a negative regulator of T cell activation. Antibody ANC152.2 reacts with CTLA-4 expressed on activated T cells. ANC152.2 blocks binding of CD152 (CTLA-4) Ig fusion protein to its CD80/CD86 receptor.

References: T. Lindsten, et al, (1993) J Immunol 151: 3489-3499. T.L. Walunas, et al, (1994) Immunity 1:405-413. N.J. Karandikar, et al, (1996) J Exp Med 184: 783-788. A. Kitani, et al, (2000) J Immunol 165: 691-702.

STORAGE CONDITIONS: Store at 2 - 5°C. Do not freeze! Protect from light.

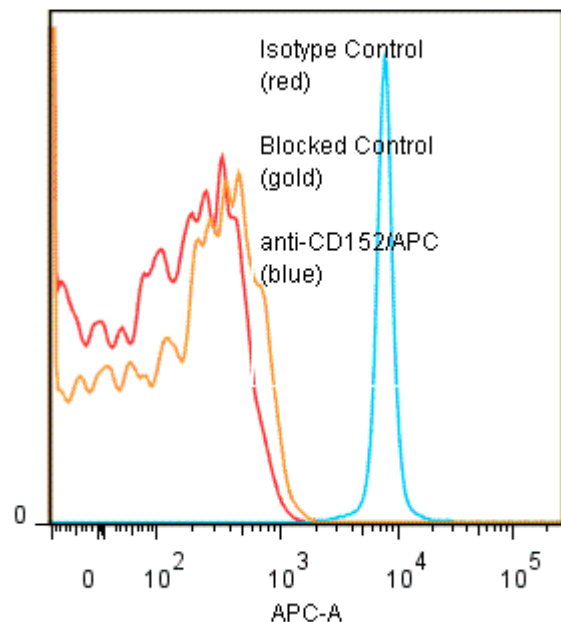
PRODUCT STABILITY: Product should retain activity for at least 12 months after shipping date when stored as recommended. Ship Date: _____

BUFFER: 50 mM Sodium Phosphate pH 7.5, 500 mM Potassium Chloride, 150mM NaCl, 15% Glycerol, 0.2% BSA, 0.04% NaN₃ (as a preservative).

PRODUCTION: Protein A purified antibody from tissue culture supernatant was conjugated to Allophycocyanin through a sulfo-ester linkage. Unconjugated antibody was removed using size exclusion chromatography. Antibody conjugate is at 500 μ g/ml with a OD650/OD280 ratio of 3.25.

PERFORMANCE: Anti-CD152/APC was tested for binding to CD152-muIg-coated 4 μ CML beads in FACS (*Inquire*). Five x 10⁵ CD152-muIg coated beads per tube were spun down and incubated 45 minutes at 4°C with 80 μ l of anti-CD152/APC at a 1:50 dilution (10 μ g/ml). Tubes were washed twice, fixed and analyzed by FACS. Beads stained positive with a mean shift of 1.92 log₁₀ fluorescent units when compared to a Mouse IgG1/APC Isotype control (Catalog #278-060). Binding was blocked when beads were pre incubated 10 minutes with 20 μ l of 0.5 mg/ml anti-CD152 antibody (Catalog #359-020).

Binding of anti-CD152/APC to Recombinant CD152-coated CML beads



* **Research Use Only. Not for use in Diagnostic procedures.**