

PERFORMANCE DATA SHEET

3209

Monoclonal anti-human CD74/APC*

mAb name/Clone: M-B741

Isotype: Mouse IgG2a

Immunogen: RPMI 1788 Cell Line

CATALOG#: 226-060

QUANTITY: 120 tests

VOLUME IN VIAL: 0.2 ml

WORKING DILUTION: 1:50 (or use 1.6µl of concentrated stock per 5 x 10⁵-cell test)

INFORMATION: Human CD74 is expressed intracellularly and on the cell surface of MHC Class II positive cells such as B cells, monocytes, macrophages, Langerhans cells and dendritic cells. CD74 has several important functions relating to antigen presentation by MHC Class II molecules. Antibody M-B741 recognizes the CD74 molecule of about 33 kd.

References: Leukocyte Typing V (S.F. Schlossman, et al, eds.) Oxford University Press, Oxford, (1995) p. 568-574. P. Romagnoli & R.N. Germain, (1995) J Exp Med **182**: 2027-2036..

STORAGE CONDITIONS: Store at 2 - 5°C. Do not freeze! Protect from light.

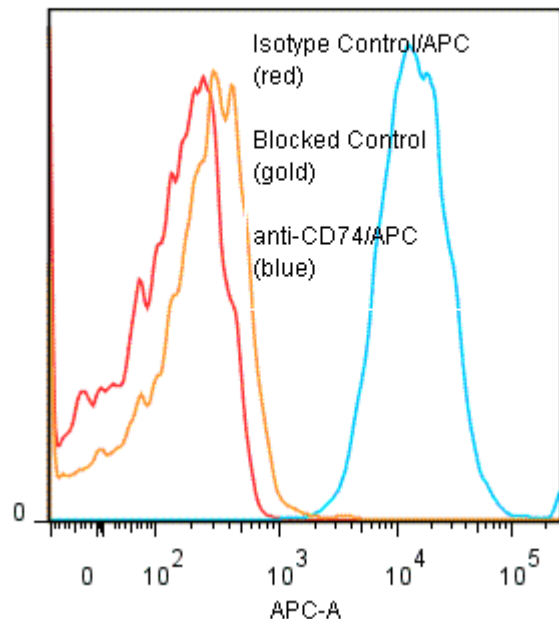
PRODUCT STABILITY: Product should retain activity for at least 12 months after shipping date when stored as recommended. Ship Date: _____

BUFFER: 50 mM Sodium Phosphate pH 7.5, 500 mM Potassium Chloride, 150mM NaCl, 15% Glycerol, 0.2% BSA, 0.04% NaN₃ (as a preservative).

PRODUCTION: Protein A purified antibody from tissue culture supernatant was conjugated to cross-linked Allophycocyanin through a sulfo-ester linkage. Unconjugated antibody was removed using size exclusion chromatography. Antibody conjugate is at approximately **0.5 mg/ml** with an APC / mAb molar ratio of **0.8**.

PERFORMANCE: Five x 10⁵ cultured **Raji** human tumor cells were washed and incubated 45 minutes on ice with 80 µl of anti-CD70/APC at a **1:50** dilution (**10 µg/ml**). Cells were washed twice, fixed and analyzed by FACS. Cells stained positive with a mean shift of **1.65** log₁₀ fluorescent units when compared to Isoptype Control Mouse IgG2a/APC (Catalog #281-060). Binding was blocked when cells were pre incubated 10 minutes with 20 µl of 0.5 mg/ml anti-CD30 antibody (Catalog #179-020).

Binding of anti-CD74/APC to human Raji cells



* *Research Use Only. Not for use in Diagnostic procedures.*