

PERFORMANCE DATA SHEET

3209

Monoclonal anti-human CD8/APC*

mAb name/Clone: 14

Isotype: Mouse IgG1

Immunogen: Human Thymocytes

CATALOG#: 154-060

QUANTITY: 120 tests

VOLUME IN VIAL: 0.2 ml

WORKING DILUTION: 1:50 (or use 1.6µl of concentrated stock per 5×10^5 -cell test)

INFORMATION: Human CD8 is a heterodimeric protein consisting of an α and β chain, each about 33 kd. CD8 is expressed on most thymocytes and on about one third of peripheral blood T cells. CD8 is a co-receptor involved in antigen recognition and binds to the $\alpha 2$ and $\alpha 3$ domain of MHC Class I molecules. Antibody 14 recognizes the CD8 α chain of approximately 33 kd.

References: Leukocyte Typing II (E.L. Reinherz, et al, eds.) Springer Verlag, New York, (1986). R. Zamoyska, (1994) Immunity **1**: 243-246. Leukocyte Typing V (S.F. Schlossman, et al, eds.) Oxford University Press, Oxford, (1995) p. 353-356. J. Sun, et al, (1995) J Exp Med **182**: 1275-1280.

STORAGE CONDITIONS: Store at 2 - 5°C. Do not freeze! Protect from light.

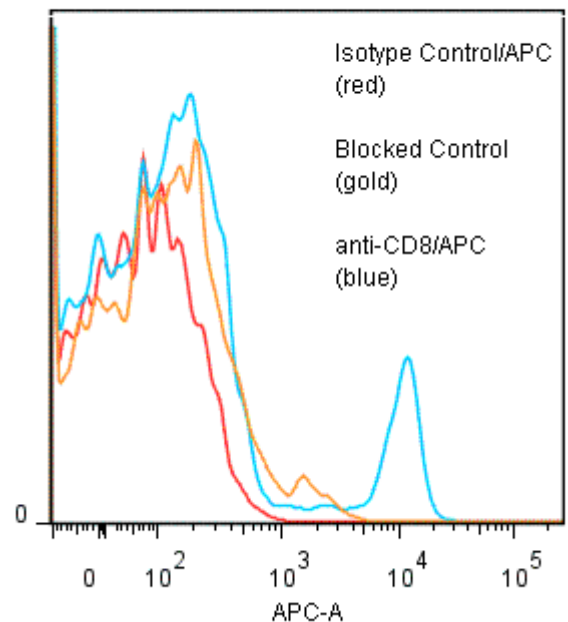
PRODUCT STABILITY: Product should retain activity for at least 12 months after shipping date when stored as recommended. Ship Date: _____

BUFFER: 50 mM Sodium Phosphate pH 7.5, 500 mM Potassium Chloride, 150mM NaCl, 15% Glycerol, 0.2% BSA, 0.04% NaN₃ (as a preservative).

PRODUCTION: Protein A purified antibody from tissue culture supernatant was conjugated to cross-linked Allophycocyanin through a sulfo-ester linkage. Unconjugated antibody was removed using size exclusion chromatography. Antibody conjugate is at approximately 0.5 mg/ml with an APC / mAb molar ratio of 0.7.

PERFORMANCE: Five $\times 10^5$ ficoll prepared human peripheral blood leucocytes were washed and pre incubated with 20 ul of 300ug/ml human IgG (to reduce non specific binding) after which they were incubated 45 minutes on ice with 80 µl of anti-CD8/APC at a 1:50 dilution (10 µg/ml). Cells were washed three times, fixed and analyzed by FACS using a lymphoid gate. A 10.3% sub population of the cells stained positive with a mean shift of 2.1 log₁₀ fluorescent units when compared to Isotype Control Mouse IgG1/APC (Catalog #278-060). Binding was blocked when cells were pre incubated 10 minutes with 20 µl of 0.5 mg/ml anti-CD8(14) antibody (Catalog #154-020).

Binding of anti-CD8/APC to human PBL



* Research Use Only. Not for use in Diagnostic procedures.