

For maximal recovery of contents
please quick spin vial before opening

Human CD137L-muCD8 Fusion Protein*

CATALOG#: 503-820 (Preservative-free)

QUANTITY: 25 µg

CONCENTRATION: 0.5 mg/ml

Molecular Structure: A soluble fusion protein consisting of the extracellular domain (184aa) of human CD137 Ligand fused to the extracellular domain (167aa) of murine CD8 alpha.

Transfectant Cell Line: CHO

INFORMATION: Human CD137 Ligand is a type II transmembrane protein constitutively expressed by monocytes, B cells and neuroblastoma cells (1). The interaction of CD137 (4-1BB) and CD137L can supply a costimulatory signal to T cells through CD137. This costimulus seems to be more effective for CD8+ effector T cells than for CD4+ helper T cells (3). The interaction can also induce monocyte activation through CD137L (2). Human CD137L-muCD8 binds to CD137 on human cells and is blocked by CD137-huIg fusion protein.

References: 1) M.R. Alderson, et al, (1994) *Eur J Immunol* **24**: 2219-2227. 2) J. Langstein, et al, (1998) *J Immunol* **160**: 2488-2494. 3) V.Y. Taraban, et al, (2002) *Eur J. Immunol.* **32**: 3617-3627.

STORAGE CONDITIONS: Store at 2 - 5°C. Open under aseptic conditions. DO NOT FREEZE

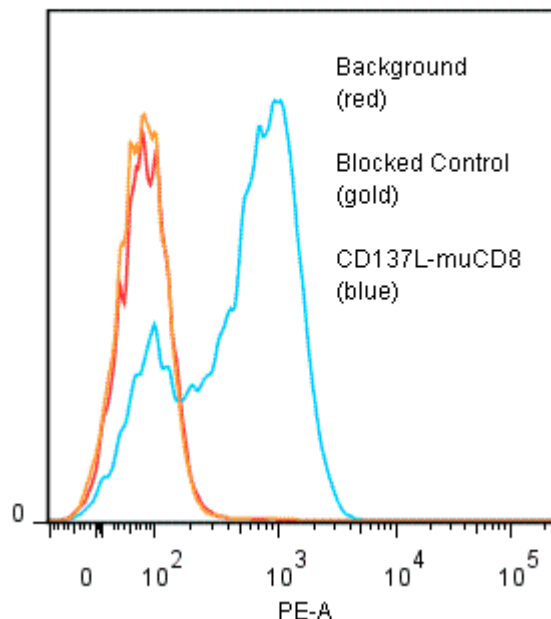
PRODUCT STABILITY: Product should retain activity for at least 6 months after shipping date when stored as recommended. Ship Date: _____

BUFFER: 50 mM Sodium Phosphate pH 7.5, 100 mM Potassium Chloride, 150mM NaCl

PRODUCTION: Fusion protein from (low FBS containing) tissue culture supernatant of transfectants was purified using affinity chromatography. Product was 0.2µ sterile-filtered and viald under aseptic conditions.

PERFORMANCE: Cultured human CEM cells were stimulated 1 day in the presence of PMA (10 ng/ml) and ionomycin (1 µM). Five x 10⁵ cells were washed and incubated 45 minutes on ice with 80 µl of CD137L-muCD8 at 10 µg/ml. Cells were washed twice and incubated with 2^o reagent anti-mouse CD8α/R-PE (clone 53-6; Catalog #260-050), after which they were washed three times, fixed and analyzed by FACS. Cells stained positive with a mean shift of 0.92 log₁₀ fluorescent units when compared to a buffer control. Binding was blocked when reagent was pre incubated 30 minutes with 50 µg/ml CD137-huIg (Catalog # 502-020).

Binding of CD137L-muCD8 +53-6/PE to stimulated human CEM cells



* *Research Use Only. Not for use in Diagnostic procedures.*