

PERFORMANCE DATA SHEET

2536

Monoclonal anti-human CD252 (CD134 L, OX40 L) R-PE*

mAb name/Clone: ANC10G1

Isotype: Mouse IgG1κ

Immunogen: Human HUVEC and Recombinant soluble human CD252

CATALOG#: 400-050

QUANTITY: 120 tests

VOLUME IN VIAL: 0.2 ml

WORKING DILUTION: 1:50 (or use 1.6µl of concentrated reagent per 5 x 10⁵-cell test)

INFORMATION: Human CD252 (CD134L, OX-40L) is a type II membrane protein with homology to TNF which is expressed on activated B cells and activated endothelial cells. CD252 binds to CD134 present on activated T cells, providing a costimulatory signal (1). This pathway seems to be more effective for costimulation of CD4+ helper T cells than for CD8+ effector T cells (4). Blockade of this interaction in mouse abrogated immunological effects in several models of inflammation and rejection (5,6,7,8). Antibody from clone ANC10G1 binds to CD252 on the cell surface of HUVEC in Flow cytometry, and blocks binding of recombinant CD134-muIg.

References: 1) W. R. Godfrey, et al, (1994) *J Exp Med* 180: 757-763. 2) L.M. Higgins, et al, (1999) *J Immunol* 162: 486-493. 3) A.D. Weinberg, et al, (1999) *J Immunol* 162: 1818-1826. 4) V.Y. Taraban, et al, (2002) *Eur J. Immunol.* 32: 3617-3627. 5) V. Malmstrom, et al, (2001) *J Immunol* 166: 6972. 6) C. Nohara, et al, (2001) *J Immunol* 166: 2108-2115. 7) X. Yuan, et al, (2003) *J Immunol* 170: 2949-2955. 8) L. Tian, et al, (2002) *Transplantation* 74(1): 133-138.

STORAGE CONDITIONS: Store at 2 - 5°C. Do not freeze! Protect from light.

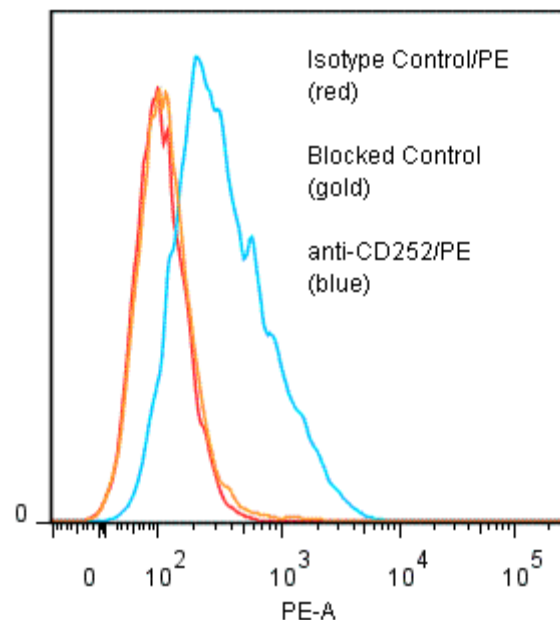
PRODUCT STABILITY: Product should retain activity for at least 12 months after shipping date when stored as recommended. Ship Date: _____

BUFFER: 50 mM Sodium Phosphate pH 7.5, 500 mM Potassium Chloride, 150mM NaCl, 15% Glycerol, 0.2% BSA, 0.04% NaN₃ (as a preservative).

PRODUCTION: Protein A purified antibody from tissue culture supernatant was conjugated to R-Phycoerythrin through a sulfo-ester linkage. Unconjugated antibody was removed using size exclusion chromatography. Antibody conjugate is at **0.5 mg/ml** with an A₅₆₅/A₂₈₀ ratio of 3.07.

PERFORMANCE: Cultured **human umbilical cord vein endothelial cells** were harvested by trypsinization, after which 5 x 10⁵ cells per tube were washed and incubated 45 minutes on ice with 80 µl of anti-CD252/R-PE at a dilution factor of **1:50** (10 µg/ml). Cells were washed three times, fixed and analyzed by FACS. Cell stained positive with a mean shift of **0.68 log₁₀** fluorescent units when compared to a Mouse IgG1/R-PE negative control (Catalog #278-050). Binding was blocked when cells were pre incubated 10 minutes with 20 µl of 0.5 mg/ml anti-CD252 antibody (Catalog #400-020).

Binding of anti-CD252(OX40L)/PE to HUVEC



*Research Use Only. Not for use in Diagnostic procedures.