

PERFORMANCE DATA SHEET

1947

Monoclonal anti-human CD45RA/FITC*

mAb name/Clone: 158.4D3

Isotype: Mouse IgG2aκ

Immunogen: Stimulated human leukocytes

CATALOG#: 394-040

QUANTITY: 120 tests

VOLUME IN VIAL: 0.2ml

WORKING DILUTION: 1:50 (or use 1.6µl of concentrated stock per 5 x 10⁵-cell test)

INFORMATION: Human CD45RA is expressed on all cells of hematopoietic origin, except erythrocytes. CD45RA is a transmembrane tyrosine phosphate which can exist in at least nine different isoforms resulting from tissue-specific alternative RNA splicing of exons 4-7 of a single gene coding for the various N-terminal peptide segments. The CD45RA isoform predominates on naive/resting T cells and medullary thymocytes. Antibody 158.4D3 recognizes all CD45 molecules containing the A region exon (1,2).

References: 1) Leukocyte Typing III (A.J. McMichael, et al, eds.) Oxford University Press, Oxford, (1987) p. 788-817. 2) A. Gaya, et al, (1990) Intl Immunol 2:685-689. 3.) I.S. Trowbridge & M.L. Thomas, (1994) Annu Rev Immunol 12: 85-116.

STORAGE CONDITIONS: Store at 2 - 5°C. Freeze/Thawing is not recommended. Protect from light.

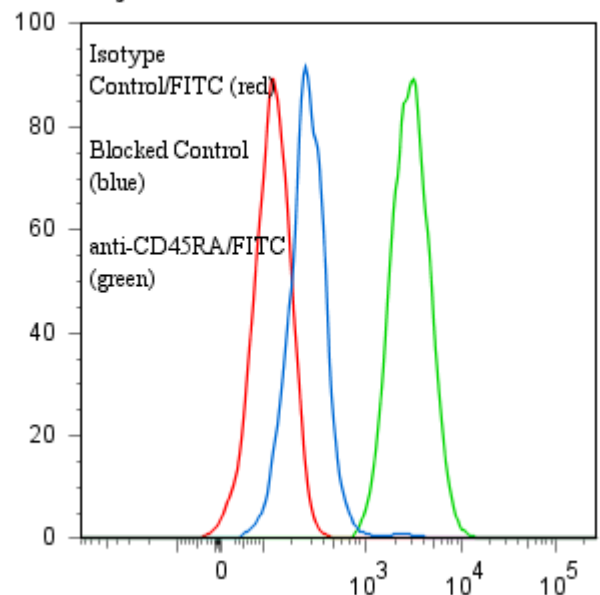
PRODUCT STABILITY: Product should retain activity for at least 12 months after shipping date when stored as recommended. Ship Date: _____

BUFFER: 50 mM Sodium Phosphate pH 7.5, 100 mM Potassium Chloride, 150mM NaCl, 5% Glycerol, 0.2% BSA, 0.04% NaN₃ (as a preservative).

PRODUCTION: Protein A purified antibody from tissue culture supernatant was reacted with FITC. Unconjugated FITC was separated from antibody/FITC conjugate by desalting column. The antibody/FITC conjugate is at a concentration of 0.5mg/ml with a FITC: Ab molar ratio of 8.2.

PERFORMANCE: Five x 10⁵ cultured **Raji** cells were washed and incubated 45 minutes on ice with 80 µl of anti-CD45RA/FITC at a 1:50 dilution factor (10 µg/ml). Cells were washed three times, fixed and analyzed by FACS. Cells stained positive with a mean shift of 1.39 log₁₀ fluorescent units when compared to a Mouse IgG2a/FITC negative control (Catalog #281-040) at a similar concentration. Binding was blocked when cells were pre incubated 10 minutes with 20 µl of 0.5 mg/ml anti-CD45RA antibody (Catalog #394-020).

Binding of anti-CD45RA/FITC to human Raji cells



***For Research Use Only. Not For Use in Diagnostic Procedures**