

## PERFORMANCE DATA SHEET

1818

# Monoclonal anti-human CD166 (ALCAM)/R-PE\*

**mAb name/Clone:** 3A6

**Isotype:** Mouse IgG1

**Immunogen:** Human thymic epithelial cells

**CATALOG#:** 393-050

**QUANTITY:** 120 tests

**VOLUME IN VIAL:** 0.2 ml

**WORKING DILUTION:** 1:50 (or use 1.6µl of concentrated stock per 5 x 10<sup>5</sup>-cell test)

**INFORMATION:** Human CD166 is a type 1 glycoprotein expressed on activated T cells, B cells and monocytes and appears to be the ligand for CD6 (1,2). Human CD166 may be important for activation of T cells. Antibody 3A6 recognizes the CD166 molecule of 100 kd. Antibody 3A6 blocks binding of CD6 to CD166.

**References:** (1). M.A. Bowen, et al, (1995) J Exp Med 181: 2213-2220. (2). M.A. Bowen, et al, (1996) J Biol Chem 271: 17390-17396. (3). Leukocyte Typing VI (T. Kishimoto, et al, eds.) Garland Publishing, Inc., New York (1997) p. 459-465.

**STORAGE CONDITIONS:** Store at 2 - 5°C. Do not freeze! Protect from light.

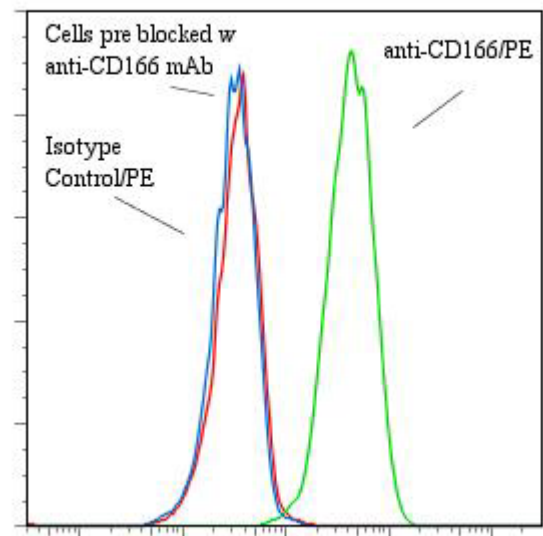
**PRODUCT STABILITY:** Product should retain activity for at least 12 months after shipping date when stored as recommended. Ship Date: \_\_\_\_\_

**BUFFER:** 50 mM Sodium Phosphate pH 7.5, 500 mM Potassium Chloride, 150mM NaCl, 15% Glycerol, 0.2% BSA, 0.04% NaN<sub>3</sub> (as a preservative).

**PRODUCTION:** Protein A purified antibody from tissue culture supernatant was conjugated to R-Phycoerythrin through a sulfo-ester linkage. Unconjugated antibody was removed using size exclusion chromatography. Antibody conjugate is at **0.5 mg/ml** with an A<sub>565</sub>/A<sub>280</sub> ratio of 3.37.

**PERFORMANCE:** Human Raji cells were washed and incubated 45 minutes on ice with 80 µl of anti-CD166/R-PE at a dilution factor of **1:50** (10µg/ml). Cells were washed three times, fixed and analyzed by FACS. Cells stained positive with a mean shift of **1.29** log<sub>10</sub> fluorescent units when compared to a Mouse IgG1/R-PE negative control (Catalog #278-050) at a similar concentration. Binding was blocked when pre incubated 10 minutes with 20 µl of 0.5 mg/ml anti-CD166 antibody (Catalog #393-020).

### Binding of anti-CD166/PE to human Raji cells



**\*This Product is intended for Laboratory Research use only.**

R-Phycoerythrin (R-PE) is covered under patents: U.S. 4,520,110; European 76,695 and Canadian 1,179,942.