

PERFORMANCE DATA SHEET

2951

Monoclonal anti-human CD166 (ALCAM)/FITC*

mAb name/Clone: 3A6

Isotype: Mouse IgG1

Immunogen: Human thymic epithelial cells

CATALOG#: 393-040

QUANTITY: 120 tests

VOLUME IN VIAL: 0.2ml

WORKING DILUTION: 1:50 (or 1.6µl of concentrated stock per 5 x 10⁵ cell test)

INFORMATION: Human CD166 is a type 1 glycoprotein expressed on activated T cells, B cells and monocytes and appears to be the ligand for CD6 (1,2). Human CD166 may be important for activation of T cells. Antibody 3A6 recognizes the CD166 molecule of 100 kd. Antibody 3A6 blocks binding of CD6 to CD166.

References: (1). M.A. Bowen, et al, (1995) J Exp Med 181: 2213-2220. (2). M.A. Bowen, et al, (1996) J Biol Chem 271: 17390-17396. (3). Leukocyte Typing VI (T. Kishimoto, et al, eds.) Garland Publishing, Inc., New York (1997) p. 459-465.

STORAGE CONDITIONS: Store at 2 - 5°C. **Freeze/Thawing is not recommended. Protect from light.**

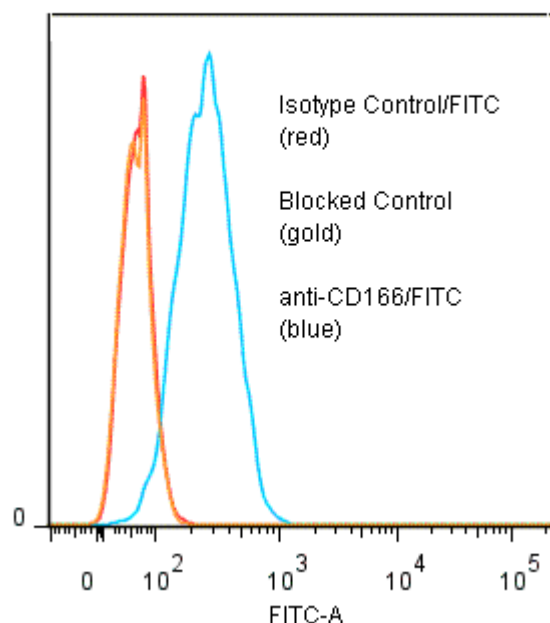
PRODUCT STABILITY: Product should retain activity for at least 12 months after shipping date when stored as recommended. Ship Date: _____

BUFFER: 50 mM Sodium Phosphate pH 7.5, 100 mM Potassium Chloride, 150mM NaCl, 5% Glycerol, 0.2% BSA, 0.04% Na₃ (as a preservative).

PRODUCTION: Protein A purified antibody from tissue culture supernatant was reacted with FITC. Unconjugated FITC was separated from antibody/FITC conjugate by desalting column. The antibody/FITC conjugate is at 0.5 mg/ml with a Fluorescein/IgG molar ratio of 5.0.

PERFORMANCE: Five x 10⁵ cultured **Raji** cells were washed and incubated 45 minutes on ice with 80 µl of anti-CD166/FITC at a 1:50 dilution factor (10µg/ml). Cells were washed three times, fixed and analyzed by FACS. Cells stained positive with a mean shift of 0.68 log₁₀ fluorescent units when compared to a Mouse IgG1/FITC negative control (Catalog #278-040). Binding was blocked when cells were pre incubated 10 minutes with 20 µl of 0.5 mg/ml anti-CD166 antibody (Catalog #393-020).

Binding of anti-CD166/FITC to human Raji cells



* **Research Use Only. Not for use in Diagnostic procedures.**