

PERFORMANCE DATA SHEET

1818

Monoclonal anti-human CD165 (AD2)*

mAb name/Clone: AD2

Isotype: Mouse IgG1

Immunogen: HSB cells

CATALOG#: 392-820 (Preservative Free)

QUANTITY: 100 µg

CONCENTRATION: 1.0 mg/ml

INFORMATION: Human CD165 is a cell surface molecule present on a subset of peripheral lymphocytes and monocytes and is important for adhesion of thymocytes to thymic epithelial cells. Antibody AD2 recognizes the CD165 molecule of 37 kd. Antibody AD2 blocks the function of CD165.

References: (1). C.S. Bruggers, D.D. Patel & R.M. Searce (1995) J Immunol 154: 2012-2022. (2). Leukocyte Typing VI (T. Kishimoto, et al, eds.) Garland Publishing, Inc., New York (1997) p. 457-459.

STORAGE CONDITIONS: Store at 2 - 5°C. Open under aseptic conditions. Freeze/Thawing is not recommended.

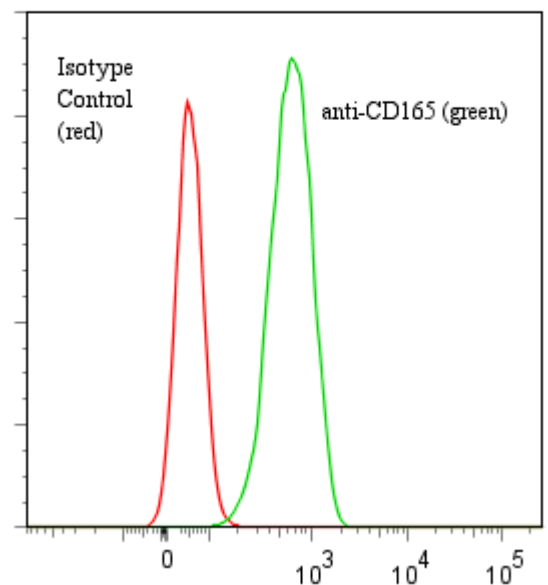
PRODUCT STABILITY: Product should retain activity for at least 12 months after shipping date when stored as recommended. Ship Date: _____

BUFFER: 50 mM Sodium Phosphate pH 7.5, 100 mM Potassium Chloride, 150mM NaCl.

PRODUCTION: Antibody was Protein A purified from (low FBS containing) tissue culture supernatant. Purity was >95% Immunoglobulin by SDS-PAGE and contains less than 1% Bovine Immunoglobulin. Product was 0.2 µm filtered and vialled under aseptic conditions.

PERFORMANCE: Five x 10⁵ cultured HPB-MLT cells per tube were washed and incubated 45 minutes on ice with 80 µl of anti-CD165 antibody at 5 µg/ml. Cells were washed twice and incubated 2^o reagent Goat anti-Mouse IgG/FITC (Catalog #232-011), after which they were washed three times, fixed and analyzed by FACS. Cells stained positive with a mean shift of 1.13 log₁₀ fluorescent units when compared to a Mouse IgG1 negative control (Catalog #278-010) at a similar concentration.

Binding of anti-CD165 Mab +GAM/FITC to human HPB-MLT cells



**This Product is intended for Laboratory Research use only.*