

PERFORMANCE DATA SHEET

1818

Monoclonal anti-human CD161/FITC*

mAb name/Clone: B199.2

Isotype: Mouse IgG2b

Immunogen: Activated human NK cells

CATALOG#: 388-040

LOT#: 152906

QUANTITY: 120 tests

VOLUME IN VIAL: 0.2 ml

WORKING DILUTION: 1:50 (or use 1.6µl of concentrated stock per 5 x 10⁵-cell test)

INFORMATION: Human CD161 is a homodimeric disulfide-linked type II membrane bound glycoprotein found mainly on NK cells. CD161 has been implicated in the regulation of NK cell mediated cytotoxicity. Antibody B199.2 recognizes the dimeric 160 kd CD161 molecule.

References: : 1. I.M. Bennett, et al, (1996) J Exp Med 184: 1845-1856. 2. L. Azzoni, et al, (1998) J Immunol 161: 3493-3500. 3. Leukocyte Typing VI (T. Kishimoto, et al, eds.) Garland Publishing, Inc., New York (1997) p. 307-317.

STORAGE CONDITIONS: Store at 2 - 5°C. Freeze/Thawing is not recommended. Protect from light.

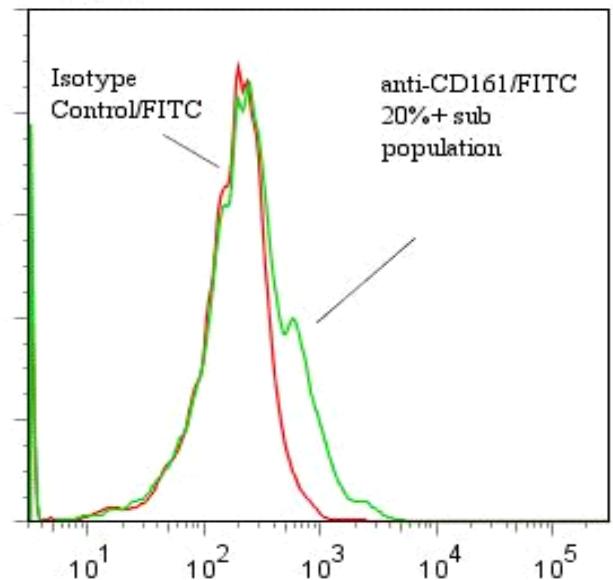
PRODUCT STABILITY: Product should retain activity for at least 12 months after shipping date when stored as recommended. Ship Date: _____

BUFFER: 50 mM Sodium Phosphate pH 7.5, 100 mM Potassium Chloride, 150mM NaCl, 5% Glycerol, 0.2% BSA, 0.04% NaN₃ (as a preservative).

PRODUCTION: Protein A purified antibody from tissue culture supernatant was reacted with FITC. Unconjugated FITC was separated from antibody/FITC conjugate by desalting column. The antibody/FITC conjugate is at **0.5 mg/ml** with a Fluorescein/Antibody molar ratio of 14.0.

PERFORMANCE: Five x 10⁵ ficoll prepared human peripheral blood mononuclear cells per tube were pre incubated 5 minutes with 250 µg/ml human IgG (to block non specific binding), after which they were incubated 45 minutes on ice with 80 µl of anti-CD161/FITC at a 1:50 dilution (10µg/ml). Cells were washed three times, fixed and analyzed by FACS. A net **15%** sub population of the cells stained positive with a mean shift of **0.65 log₁₀** fluorescent units when compared to a Mouse IgG2b/FITC negative control (Catalog #284-040) at a similar concentration. Binding was blocked when cells were pre incubated 10 minutes with 20 µl of 0.5 mg/ml anti-CD161 antibody (Catalog #388-020).

Binding of anti-CD161/FITC to human PBMC



**This Product is intended for Laboratory Research use only.*