

# PERFORMANCE DATA SHEET

2913

## Monoclonal anti-human CD152 (CTLA-4)\*

**mAb name/Clone:** ANC152.2/8H5

**Isotype:** Mouse IgG1 $\kappa$

**Immunogen:** Stimulated human PBL's and human CD152 Ig fusion protein

**CATALOG#:** 359-820 (Preservative Free)

**QUANTITY:** 100  $\mu$ g

**CONCENTRATION:** 1.0 mg/ml

**INFORMATION:** Human CD152 (CTLA-4) is a cell surface glycoprotein expressed at low levels on activated T cells. CD152 is a high affinity receptor for the costimulatory molecules CD80 (B7-1) and CD86 (B7-2) and appears to function as a negative regulator of T cell activation. Antibody ANC152.2 reacts with CTLA-4 expressed on activated T cells. ANC152.2 blocks binding of CD152 (CTLA-4) Ig fusion protein to its CD80/CD86 receptor.

**References:** T. Lindsten, et al, (1993) J Immunol 151: 3489-3499. T.L. Walunas, et al, (1994) Immunity 1:405-413. N.J. Karandikar, et al, (1996) J Exp Med 184: 783-788. A. Kitani, et al, (2000) J Immunol 165: 691-702.

**STORAGE CONDITIONS:** Store at 2 - 5°C. *Open under aseptic conditions.* Freeze/Thawing is not recommended.

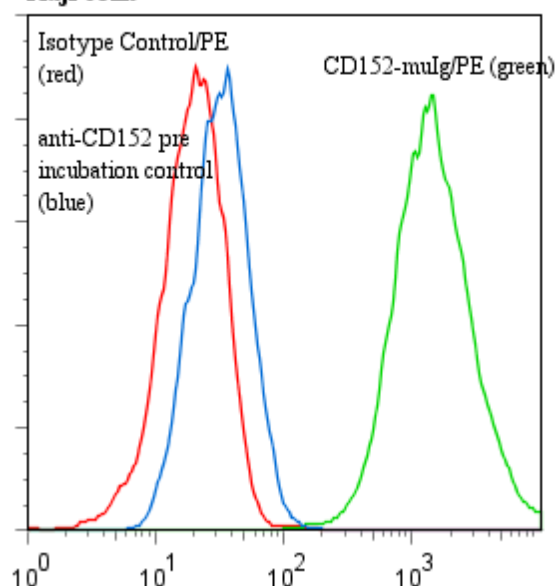
**PRODUCT STABILITY:** Product should retain activity for at least 12 months after shipping date when stored as recommended. Ship Date:\_\_\_\_\_

**BUFFER:** 50 mM Sodium Phosphate pH 7.5, 100 mM Potassium Chloride, 150mM NaCl.

**PRODUCTION:** Antibody was Protein A purified from (low FBS containing) tissue culture supernatant. Purity was >95% Immunoglobulin by SDS-PAGE and contains less than 1% Bovine Immunoglobulin. Product was 0.2  $\mu$ m filtered and vialled under aseptic conditions.

**PERFORMANCE:** Anti-CD152 (clone ANC152.2/8H5) antibody blocked the binding of recombinant CD152-muIg fusion protein/R-PE conjugate (Catalog #501-050) to CD80 and CD86 expressed on human Raji cells. Five x 10<sup>5</sup> cultured Raji human tumor cells were washed and incubated 45 minutes on ice with 80  $\mu$ l of CD152-muIg/R-PE at a concentration of 1  $\mu$ g/ml. Cells were washed three times, fixed and analyzed by FACS. Cells stained positive with a mean shift of 1.79 log<sub>10</sub> fluorescent units when compared to a Mouse IgG2a Isotype control/PE conjugate (catalog #281-050). **Binding was blocked when CD152 muIg/R-PE fusion protein was pre incubated 10 minutes with a five fold excess (w/w) of anti-CD152 mAb (5  $\mu$ g/ml).**

### Binding of CD152-muIg/PE to human Raji cells



\* *Research Use Only. Not for use in Diagnostic procedures.*