

## PERFORMANCE DATA SHEET

1818

# Monoclonal anti-human CD152 (CTLA-4) F(ab')<sub>2</sub>\*

**mAb name/Clone:** ANC152.2/8H5

**Isotype:** Mouse IgG1 $\kappa$

**Immunogen:** Stimulated human PBL's and human CD152 Ig fusion protein

**CATALOG#:** 359-520

**QUANTITY:** 100  $\mu$ g

**CONCENTRATION:** 1.0 mg/ml

**INFORMATION:** Human CD152 (CTLA-4) is a cell surface glycoprotein expressed at low levels on activated T cells. CD152 is a high affinity receptor for the costimulatory molecules CD80 (B7-1) and CD86 (B7-2) and appears to function as a negative regulator of T cell activation. Antibody ANC152.2 reacts with CTLA-4 expressed on activated T cells. ANC152.2 binds to CD152 present on activated T cells, and blocks binding of recombinant CD152 (CTLA-4) fusion protein to CD80/CD86 receptors.

**References:** T. Lindsten, et al, (1993) J Immunol 151: 3489-3499. T.L. Walunas, et al, (1994) Immunity 1:405-413. N.J. Karandikar, et al, (1996) J Exp Med 184: 783-788. A. Kitani, et al, (2000) J Immunol 165: 691-702.

**STORAGE CONDITIONS:** Store at 2 - 5°C. Open under aseptic conditions. Freeze/Thawing is not recommended.

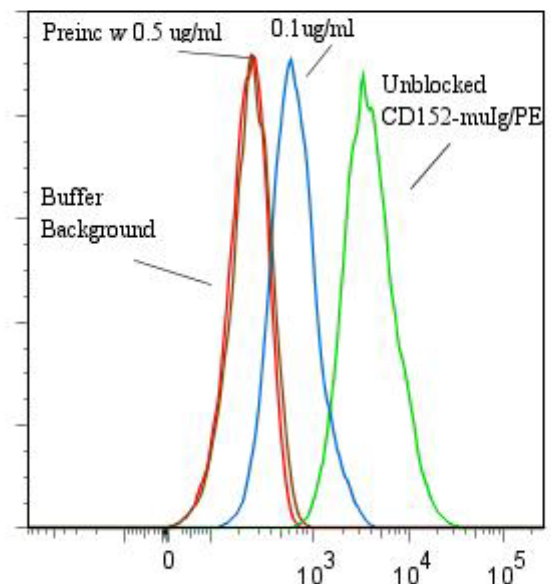
**PRODUCT STABILITY:** Product should retain activity for at least 12 months after shipping date when stored as recommended. Ship Date: \_\_\_\_\_

**BUFFER:** 50 mM Sodium Phosphate pH 7.5, 100 mM Potassium Chloride, 150mM NaCl. Product was 0.1 $\mu$ m filtered and vialled under aseptic conditions. **No preservative added.**

**PRODUCTION:** Antibody was Protein A purified from (low FBS containing) tissue culture supernatant. Immunoglobulin was enzymatically cleaved using Immobilized Ficin. F(ab')<sub>2</sub> was separated from intact antibody, Fab monomer and Fc fragments by Protein A and Size exclusion chromatography. Purity was >90% F(ab')<sub>2</sub>.

**PERFORMANCE:** Anti-CD152 F(ab')<sub>2</sub> blocked the binding of CD152  $\mu$ Ig fusion protein/R-PE conjugate (Catalog #501-050) to CD80 and CD86 expressed on human Raji cells, as assessed by FACS. Binding was blocked when the CD152  $\mu$ Ig/R-PE fusion protein was pre incubated with an excess of anti-CD152 F(ab')<sub>2</sub>.

### anti-CD152(Fab')<sub>2</sub> blocks binding of Recombinant CD152- $\mu$ Ig/PE to CD80 and CD86 on human Raji cells



*\*This Product is intended for Laboratory Research use only.*