

PERFORMANCE DATA SHEET

3224

Monoclonal anti-human CD152 (CTLA-4)/FITC*

mAb name/Clone: ANC152.2/8H5

Isotype: Mouse IgG1κ

Immunogen: Stimulated human PBL's and human CD152 Ig fusion protein

CATALOG#: 359-040

QUANTITY: 120 tests

VOLUME IN VIAL: 0.2ml

WORKING DILUTION: 1:50 (or use 1.6µl of concentrated stock per 5×10^5 -cell test)

INFORMATION: Human CD152 (CTLA-4) is a cell surface glycoprotein expressed at low levels on activated T cells. CD152 is a high affinity receptor for the costimulatory molecules CD80 (B7-1) and CD86 (B7-2) and appears to function as a negative regulator of T cell activation. Antibody ANC152.2 reacts with CTLA-4 expressed on activated T cells. ANC152.2 blocks binding of CD152 (CTLA-4) Ig fusion protein to its CD80/CD86 receptor.

References: T. Lindsten, et al, (1993) J Immunol 151: 3489-3499. T.L. Walunas, et al, (1994) Immunity 1:405-413. N.J. Karandikar, et al, (1996) J Exp Med 184: 783-788. A. Kitani, et al, (2000) J Immunol 165: 691-702.

STORAGE CONDITIONS: Store at 2 - 5°C. Freeze/Thawing is not recommended. **Protect from light.**

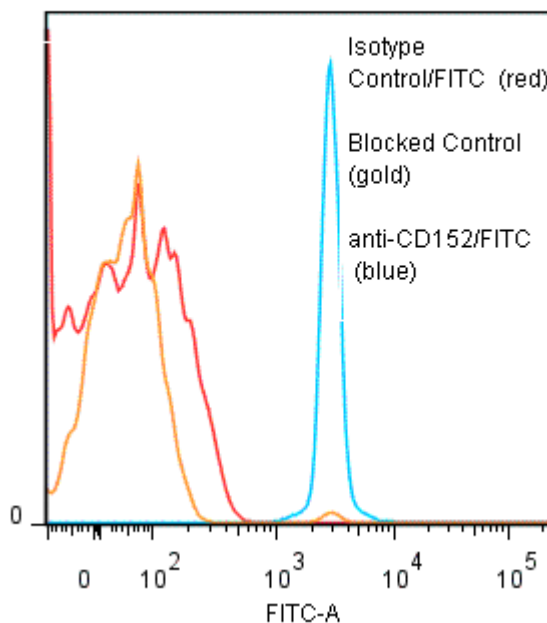
PRODUCT STABILITY: Product should retain activity for at least 12 months after shipping date when stored as recommended. Ship Date: _____

BUFFER: 50 mM Sodium Phosphate pH 7.5, 100 mM Potassium Chloride, 150mM NaCl, 5% Glycerol, 0.2% BSA, 0.04% NaN₃ (as a preservative).

PRODUCTION: Protein A purified antibody from tissue culture supernatant was reacted with FITC. Unconjugated FITC was separated from antibody/FITC conjugate by desalting column. The antibody/FITC conjugate is at **0.5 mg/ml** with a Fluorescein/IgG molar ratio of 4.8.

PERFORMANCE: Anti-CD152/FITC was tested for binding to CD152-muIg-coated 4µ beads in FACS (*Inquire*). Two $\times 10^5$ CD152-muIg coated beads per tube were spun down and incubated 45 minutes at 4°C with 80µl of anti-CD152/FITC at a 1:50 dilution (10µg/ml). Tubes were washed twice, fixed and analyzed by FACS. Beads stained positive with a mean shift of **1.8 log₁₀** fluorescent units when compared to a Mouse IgG1/FITC Isotype control (Catalog #278-040). Binding was blocked when beads were pre incubated 10 minutes with 20 µl of 0.5 mg/ml anti-CD152 antibody (Catalog #359-020).

Binding of anti-CD152/FITC to recombinant CD152-coated CML beads



* **Research Use Only. Not for use in Diagnostic procedures.**