

# PERFORMANCE DATA SHEET

3354

## Monoclonal anti-human bcl-2/R-PE \*

**mAb name/Clone:** Bcl-2/100

**Isotype:** Mouse IgG1

**Immunogen:** Human bcl-2 peptide 41-54

**CATALOG#:** 357-050

**QUANTITY:** 120 tests

**VOLUME IN VIAL:** 0.2ml

**WORKING DILUTION:** 1:50 (or use 1.6ul of concentrated stock per  $5 \times 10^5$ -cell test)

**INFORMATION:** The human bcl-2 gene family plays a central role in lymphoid system cell survival. Continuous expression of bcl-2 protein is critical for preventing apoptosis of mature peripheral B and T cells. Antibody Bcl-2/100 recognizes the intracellular 26 kd bcl-2 protein.

**References:** F. Pezzella, et al, (1990) Am J Pathol **137**: 225-232. I.A. Doussis, et al, (1993) Am J Clin Pathol **99**: 663-667. S. Cory, (1995) Annu Rev Immunol **13**: 513-543.

**STORAGE CONDITIONS:** Store at 2 - 5°C. Do not freeze! Protect from light.

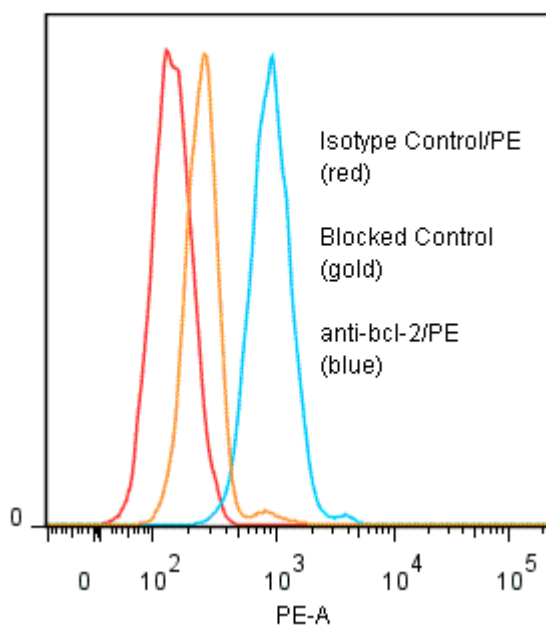
**PRODUCT STABILITY:** Product should retain activity for at least 12 months after shipping date when stored as recommended. Ship Date: \_\_\_\_\_

**BUFFER:** 50 mM Sodium Phosphate pH 7.5, 500 mM Potassium Chloride, 150mM NaCl, 15% Glycerol, 0.2% BSA, 0.04%  $\text{NaN}_3$  (as a preservative).

**PRODUCTION:** Protein A purified antibody from tissue culture supernatant was conjugated to R-Phycoerythrin through a sulfo-ester linkage. Unconjugated antibody was removed using size exclusion chromatography. Antibody conjugate is at **0.5 mg/ml**.

**PERFORMANCE:** Cultured **Nalm-6** human tumor cells were fixed for 20 min with 0.5% freshly prepared buffered formaldehyde after which they were washed two times. Subsequent reagent incubations and washes were done at room temperature on a shaker platform using a buffer containing **0.5% Tween-20** to permeabilize cells. Five  $\times 10^5$  cells per tube were incubated 45 minutes with 80  $\mu\text{l}$  of anti-bcl-2/R-PE at a **1:50** dilution (10 $\mu\text{g/ml}$ ). Cells were then washed three times, fixed and analyzed by FACS. Cells stained positive with a mean shift of **0.8 log<sub>10</sub>** fluorescent units when compared to Mouse IgG1/PE (Catalog #278-050). This shift was blocked when cells were pre incubated with unlabeled anti-bcl-2 mAb (Cat# 357-020) at a 10 fold excess.

**Binding of anti-Bcl-2/PE to fixed permeabilized human Nalm-6 cells**



\* *Research use only. Not for use in Diagnostic procedures.*