

# PERFORMANCE DATA SHEET

2429

## Monoclonal anti-human bcl-2/Biotin\*

**mAb name/Clone:** Bcl-2/100

**Isotype:** Mouse IgG1

**Immunogen:** Human bcl-2 peptide 41-54

**CATALOG#:** 357-030

**QUANTITY:** 100 µg

**CONCENTRATION:** 1.0 mg/ml

**INFORMATION:** The human bcl-2 gene family plays a central role in lymphoid system cell survival. Continuous expression of bcl-2 protein is critical for preventing apoptosis of mature peripheral B and T cells. Antibody Bcl-2/100 recognizes the intracellular 26 kd bcl-2 protein.

**References:** F. Pezzella, et al, (1990) Am J Pathol **137**: 225-232. I.A. Doussis, et al, (1993) Am J Clin Pathol **99**: 663-667. S. Cory, (1995) Annu Rev Immunol **13**: 513-543.

**STORAGE CONDITIONS:** Store at 2 - 5°C. Freeze/thawing not recommended.

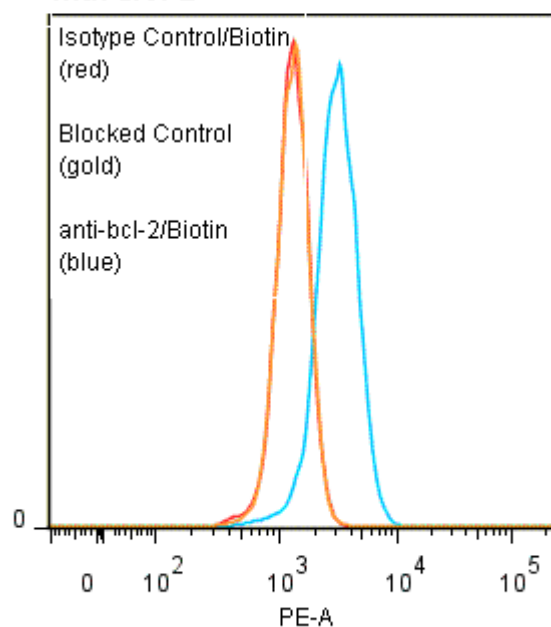
**PRODUCT STABILITY:** Product should retain activity for at least 12 months after shipping date when stored as recommended. Ship Date: \_\_\_\_\_

**BUFFER:** 50 mM Sodium Phosphate pH 7.5, 100 mM Potassium Chloride, 150mM NaCl, 5% Glycerol, 0.2% BSA, 0.04% NaN<sub>3</sub> (as a preservative).

**PRODUCTION:** Antibody from (low FBS containing) tissue culture supernatant was Protein A purified to >95% mouse immunoglobulin by SDS-PAGE (<1% bovine immunoglobulin), and reacted with NHS-Biotin. Unconjugated Biotin was removed using a desalting column.

**PERFORMANCE:** Cultured Nalm-6 human tumor cells were fixed for 30 min with 2% buffered formaldehyde after which they were washed two times. Subsequent reagent incubations and wash steps were done using a buffer containing **0.3% Saponin** to permeabilize cells. Five x 10<sup>5</sup> cells per tube were incubated 45 minutes on ice with 80 µl of anti-bcl-2/Biotin at **5 µg/ml**. The cells were then washed twice and incubated with 2° reagent Streptavidin/R-Phycoerythrin (Catalog #253-050), after which they were washed three times, fixed and analyzed by FACS. Cells stained positive with a mean shift of **0.39 log<sub>10</sub>** fluorescent units when compared to a Mouse IgG1/Biotin negative control (Catalog #278-030). This shift was blocked when permeabilized cells were pre incubated 10 minutes with 20 µl of 0.5 mg/ml unlabeled anti-bcl-2 antibody (Catalog #357-020).

### Binding of anti-bcl-2/Biotin to fixed permeabilized human Nalm-6 cells with SA/PE



\* **Research Use Only. Not for use in Diagnostic procedures.**