

PERFORMANCE DATA SHEET

2134

Monoclonal anti-human CD49f(VLA-6)/FITC*

mAb name/Clone: BQ16

Isotype: Mouse IgG1

Immunogen: UM-UC-9, human bladder cancer cells

CATALOG#: 356-040

QUANTITY: 120 tests

VOLUME IN VIAL: 0.2 ml

WORKING DILUTION: 1:50 (or use 1.6µl of concentrated stock per 5 x 10⁵-cell test)

INFORMATION: Human CD49f molecules are integrin α6 chains that are expressed as heterodimers with CD29 (β1 integrin) or CD104 (β4 integrin) and function as adhesion receptors. CD49f is expressed on platelets, monocytes, T lymphocytes and thymocytes. The ligands for CD49f/CD29 include laminin and invasion. CD49f/CD29 has been shown to associate with CD63.

References: M. Liebert, et al, (1993) Hybridoma 12: 67-80. Leukocyte Typing V (S.F. Schlossman, et al, eds.) Oxford University Press, Oxford, (1995) p. 1619-1620. F. Berditchevski, et al, (1995) J Biol Chem 270: 17784-17790.

STORAGE CONDITIONS: Store at 2 - 5°C. Freeze/Thawing is not recommended. Protect from light.

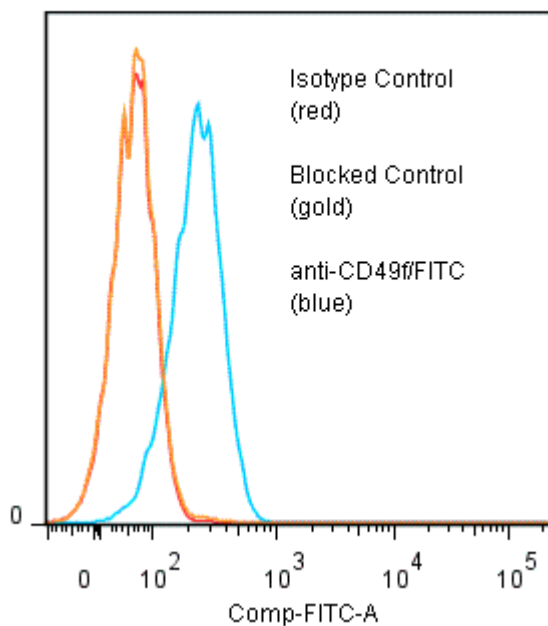
PRODUCT STABILITY: Product should retain activity for at least 12 months after shipping date when stored as recommended. Ship Date: _____

BUFFER: 50 mM Sodium Phosphate pH 7.5, 100 mM Potassium Chloride, 150mM NaCl, 5% Glycerol, 0.2% BSA, 0.04% NaN₃ (as a preservative).

PRODUCTION: Protein A purified antibody from tissue culture supernatant was reacted with FITC. Unconjugated FITC was separated from antibody/FITC conjugate by desalting column. The antibody/FITC conjugate is at 0.5 mg/ml with a Fluorescein/Antibody molar ratio of 6.4.

PERFORMANCE: Five x 10⁵ cultured Raji human tumor cells were washed and incubated 45 minutes on ice with 80 µl of anti-CD49f/FITC at a 1:50 dilution (10 µg/ml). Cells were washed three times, fixed and analyzed by FACS. Cells stained positive with a mean shift of 0.63 log₁₀ fluorescent units when compared to a Mouse IgG1/FITC negative control (Catalog #278-040) at a similar concentration. Binding was blocked when cells were pre incubated 10 minutes with 20 µl of 0.5 mg/ml anti-CD49f antibody (Catalog #356-020).

Binding of anti-CD49f/FITC to human Raji cells



* Research Use Only. Not for use in Diagnostic procedures.