

PERFORMANCE DATA SHEET

2134



Monoclonal anti-human CD49f(VLA-6)/FITC*

mAb name/Clone: BQ16

Isotype: Mouse IgG1

Immunogen: UM-UC-9, human bladder cancer cells

CATALOG#: 356-040

QUANTITY: 120 tests

VOLUME IN VIAL: 0.2 ml

WORKING DILUTION: 1:50 (or use 1.6µl of concentrated stock per 5×10^5 -cell test)

INFORMATION: Human CD49f molecules are integrin $\alpha 6$ chains that are expressed as heterodimers with CD29 ($\beta 1$ integrin) or CD104 ($\beta 4$ integrin) and function as adhesion receptors. CD49f is expressed on platelets, monocytes, T lymphocytes and thymocytes. The ligands for CD49f/CD29 include laminin and invasion. CD49f/CD29 has been shown to associate with CD63.

References: M. Liebert, et al, (1993) Hybridoma 12: 67-80. Leukocyte Typing V (S.F. Schlossman, et al, eds.) Oxford University Press, Oxford, (1995) p. 1619-1620. F. Berditchevski, et al, (1995) J Biol Chem 270: 17784-17790.

STORAGE CONDITIONS: Store at 2 - 5°C. Freeze/Thawing is not recommended. Protect from light.

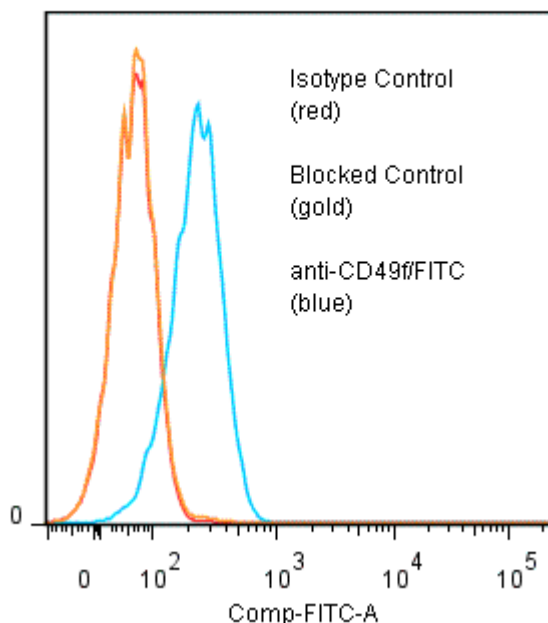
PRODUCT STABILITY: Product should retain activity for at least 12 months after shipping date when stored as recommended. Ship Date: _____

BUFFER: 50 mM Sodium Phosphate pH 7.5, 100 mM Potassium Chloride, 150mM NaCl, 5% Glycerol, 0.2% BSA, 0.04% NaN_3 (as a preservative).

PRODUCTION: Protein A purified antibody from tissue culture supernatant was reacted with FITC. Unconjugated FITC was separated from antibody/FITC conjugate by desalting column. The antibody/FITC conjugate is at **0.5 mg/ml** with a Fluorescein/Antibody molar ratio of 6.4.

PERFORMANCE: Five $\times 10^5$ cultured **Raji** human tumor cells were washed and incubated 45 minutes on ice with 80 µl of anti-CD49f/FITC at a **1:50** dilution (10 µg/ml). Cells were washed three times, fixed and analyzed by FACS. Cells stained positive with a mean shift of **0.63** \log_{10} fluorescent units when compared to a Mouse IgG1/FITC negative control (Catalog #278-040). Binding was blocked when cells were pre incubated 10 minutes with 20 µl of 0.5 mg/ml anti-CD49f antibody (Catalog #356-020).

Binding of anti-CD49f/FITC to human Raji cells



* **Research Use Only. Not for use in Diagnostic procedures.**