

PERFORMANCE DATA SHEET

2410

Monoclonal anti-human CD155(PVR)/FITC*

mAb name/Clone: ANC6A3

Isotype: Mouse IgG1κ

Immunogen: Recombinant human CD155

CATALOG#: 350-040

QUANTITY: 120 tests

VOLUME IN VIAL: 0.2ml

WORKING DILUTION: 1:50 (or use 1.6μl of concentrated stock per 5 x 10⁵-cell test)

INFORMATION: Human CD155 (Polio Virus Receptor, PVR, Necl-5) is a 70 kd type I Ig superfamily molecule (1). It is involved in formation of intracellular junctions between epithelial cells. Its ligands include CD226(DNAM-1), and CD96(TACTILE). CD155 expression by tumor has been shown to be upregulated by Nitric Oxide(2). A soluble version of CD155 has been shown to exist (4). High CD155 expression has recently been exploited to use engineered poliovirus to treat glioblastoma. (3)

Antibody ANC6A3 binds to cell surface CD155 on U-937 cells, and binds to recombinant CD155 in EIA. Antibodies ANC6A3 and ANC2B2 (Catalog # 255-020) each bind to distinct epitopes of CD155 and are suitable as a matched pair for sandwich EIA.

References: 1) Medelsohn CL, Racaniello VR, et al. (1989) *Cell* **56**(5): 855-65. 2) C Fionda, M Cippitelli, et al. (2015) *BMC Cancer* **15**(1):17 PMID 25609078. 3) Gromeier M, Bigner D, et al. (2014) *Neuro-Oncology* **16**(supp3): iii41. 4) Baury B, MG Denis, et al. (2003) *Biochem Biophys Res Comm* **309**: 175-82.

STORAGE CONDITIONS: Store at 2 - 5°C. Freeze/Thawing is not recommended. Protect from light.

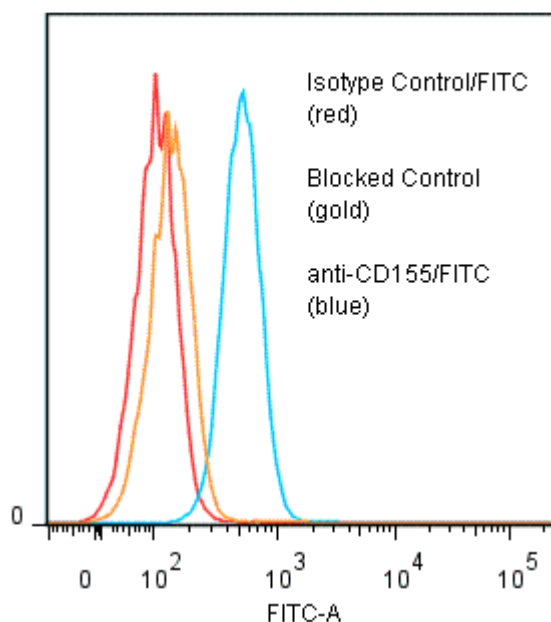
PRODUCT STABILITY: Product should retain activity for at least 12 months after shipping date when stored as recommended. Ship Date: _____

BUFFER: 50 mM Sodium Phosphate pH 7.5, 100 mM Potassium Chloride, 150mM NaCl, 5% Glycerol, 0.2% BSA, 0.04% NaN₃ (as a preservative).

PRODUCTION: Protein A purified antibody from tissue culture supernatant was reacted with FITC. Unconjugated FITC was separated from antibody/FITC conjugate by desalting column. The antibody/FITC conjugate is at approximately 1.0 mg/ml with a Fluorescein/IgG molar ratio of 10.9.

PERFORMANCE: Five x 10⁵ cultured human U-937 cells per tube were washed and pre incubated 5 minutes with 20 μl of 300 μg/ml human IgG (to reduce non specific binding) after which they were incubated 45 minutes on ice with 80 ul of anti-human CD155/FITC at a 1:50 dilution (20 ug/ml). They were then washed three times, fixed and analyzed by FACS. Cells stained positive with a mean shift of 0.85 log₁₀ fluorescent units when compared to a Mouse IgG1/FITC negative control (Catalog #278-040). Binding was blocked when cells were pre incubated 10 minutes with 20 μl of 0.5 mg/ml anti-CD155(ANC6A3) antibody (Catalog #350-020).

Binding of anti-CD155(ANC6A3)/FITC to human U-937 cells



*Research Use Only. Not for use in Diagnostic procedures.

Ansell Corporation P.O. Box Bayport, MN 55003-0087 USA
Phone: Toll free 800-374-9523 or 651-439-0835 Fax: 651-439-1940