

# PERFORMANCE DATA SHEET

2546

## Monoclonal anti-human Hif-1 $\alpha$ \*

**mAb name/Clone:** ANC10G3

**Isotype:** Mouse IgG1k

**Immunogen:** Recombinant human Hif1 $\alpha$

**CATALOG#:** 335-020

**QUANTITY:** 100  $\mu$ g

**CONCENTRATION:** 1.0 mg/ml

**INFORMATION:** Hypoxia Inducible Factor 1 alpha (Hif1 $\alpha$ ) is a transcription factor which accumulates in the nucleus of cells in most tissues which are subjected to hypoxic conditions. There it stabilizes by associating with Hif1 beta (ARNT). Clone ANC10G3 binds to recombinant human Hif1 $\alpha$  in EIA, as well as native Hif1 $\alpha$  present in nuclei of fixed permeabilized Nalm-6 cells cultured overnight with CoCl<sub>2</sub> to simulate hypoxia. It interferes with binding of anti-Hif1 $\alpha$  clone 546-16, suggesting that their epitopes overlap.

**Hif1 References:** 1) GL Wang, GL Song, et al. (1993) *PNAS* **90**: 4304.

**STORAGE CONDITIONS:** Store at 2 - 5°C. Freeze/Thawing is not recommended.

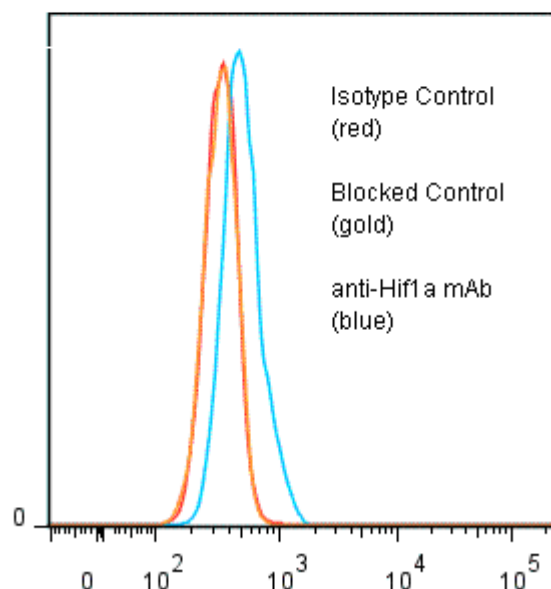
**PRODUCT STABILITY:** Product should retain activity for at least 12 months after shipping date when stored as recommended. Ship Date: \_\_\_\_\_

**BUFFER:** 50 mM Sodium Phosphate pH 7.5, 100 mM Potassium Chloride, 150mM NaCl, 0.5 mg/ml Gentamicin sulfate (as a preservative).

**PRODUCTION:** Antibody was Protein A purified from (low FBS containing) tissue culture supernatant. Purity was >95% Immunoglobulin by SDS-PAGE and contains less than 1% Bovine Immunoglobulin. Product was 0.2  $\mu$ m filtered and vialled under aseptic conditions.

**PERFORMANCE:** Antibody specific activity was tested in FACS. Human Nalm-6 cells were cultured overnight in the presence of 200  $\mu$ M CoCl<sub>2</sub> to simulate hypoxia, after which they were fixed and permeabilized using EBioscience FOXP3 staining kit. Five x 10<sup>5</sup> cells per tube were washed and incubated 45 minutes with anti-Hif1 $\alpha$  mAb at 5  $\mu$ g/ml. Cells were washed twice and incubated with 2<sup>o</sup> reagent Goat anti-Mouse IgG/FITC (Catalog #232-011), after which they were washed three times, fixed and analyzed by FACS. Cells stained positive with a mean shift of 0.13 log<sub>10</sub> fluorescent units when compared to a Mouse IgG1 negative control (Catalog #278-010) at a similar concentration. Binding was blocked when mAb was pre incubated with 100 $\mu$ g/ml recombinant Hif1 $\alpha$ .

**Binding of anti-Hif1 $\alpha$  Mab +GAM/FITC to CoCl<sub>2</sub> treated fixed permeabilized Nalm-6 cells**



\* *Research Use Only. Not for use in Diagnostic procedures.*