

# PERFORMANCE DATA SHEET

2725

## Monoclonal anti-human CD106(VCAM-1)/FITC\*

**mAb name/Clone:** 1.G11B1

**Isotype:** Mouse IgG1

**Immunogen:** Human endothelial cells

**CATALOG#:** 327-040

**QUANTITY:** 120 tests

**VOLUME IN VIAL:** 0.2 ml

**WORKING DILUTION:** 1:50 (or use 1.6µl of concentrated stock per 5 x 10<sup>5</sup>-cell test)

**INFORMATION:** Human CD106 is an endothelial adhesion molecule that binds to  $\alpha_4\beta_1$  &  $\alpha_4\beta_7$  integrins (VLA-4) and promotes adhesion of lymphocytes, monocytes, eosinophils and basophils. CD106 is also found on follicular dendritic cells, interdigitating reticulum cells and Kupffer cells. Antibody 1.G11B1 recognizes the VCAM-1 molecule (CD106) and blocks leukocyte adhesion.

**References:** M.H. Thornhill, D.O. Haskard, (1991) J Immunol **146**: 592-598. Leukocyte Typing V (S.F. Schlossman, et al, eds.) Oxford University Press, Oxford, (1995) p. 1764-1767. M. Nagata, et al, (1995) J Immunol **155**: 2194-2202. H.E. Chuluyan, et al, (1995) J Immunol **155**: 3135-314.

**STORAGE CONDITIONS:** Store at 2 - 5°C. Freeze/Thawing is not recommended. **Protect from light.**

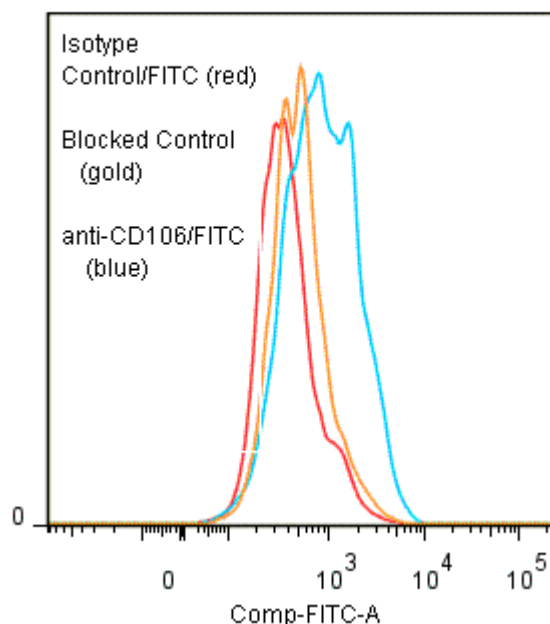
**PRODUCT STABILITY:** Product should retain activity for at least 12 months after shipping date when stored as recommended. Ship Date: \_\_\_\_\_

**BUFFER:** 50 mM Sodium Phosphate pH 7.5, 100 mM Potassium Chloride, 150mM NaCl, 5% Glycerol, 0.2% BSA, 0.04% NaN<sub>3</sub> (as a preservative).

**PRODUCTION:** Protein A purified antibody from tissue culture supernatant was reacted with FITC. Unconjugated FITC was separated from antibody/FITC conjugate by desalting column. The antibody/FITC conjugate is at 0.5 mg/ml with a Fluorescein/Antibody molar ratio of 8.2.

**PERFORMANCE:** Cultured human umbilical cord vein endothelial cells were stimulated 4 hours with 10ng/ml Phorbol 12-Myristate 13-Acetate. Five x 10<sup>5</sup> cells per tube were then washed and incubated 45 minutes on ice with 80 µl of anti-CD106/FITC at a 1:50 dilution (10 µg/ml). Cells were washed three times, fixed and analyzed by FACS. Cells stained positive with a mean shift of 0.6 log<sub>10</sub> fluorescent units when compared to a Mouse IgG1/FITC negative control (Catalog #278-040). Binding was blocked when cells were pre incubated 10 minutes with 20 µl of 0.5 mg/ml anti-CD106 antibody (Catalog #327-020).

### Binding of anti-CD106/FITC to stimulated HUVEC



\* Research Use Only. Not For Use In Diagnostic Procedures.