

## PERFORMANCE DATA SHEET

1919

### Monoclonal anti-human CD106(VCAM-1)\*

**mAb name/Clone:** 1.G11B1

**Isotype:** Mouse IgG1

**Immunogen:** Human endothelial cells

**CATALOG#:** 327-020

**QUANTITY:** 100 µg

**CONCENTRATION:** 1.0 mg/ml

**INFORMATION:** Human CD106 is an endothelial adhesion molecule that binds to  $\alpha_4\beta_1$  &  $\alpha_4\beta_7$  integrins (VLA-4) and promotes adhesion of lymphocytes, monocytes, eosinophils and basophils. CD106 is also found on follicular dendritic cells, interdigitating reticulum cells and Kupffer cells. Antibody 1.G11B1 recognizes the VCAM-1 molecule (CD106) and blocks leukocyte adhesion.

**References:** M.H. Thornhill, D.O. Haskard, (1991) J Immunol **146**: 592-598. Leukocyte Typing V (S.F. Schlossman, et al, eds.) Oxford University Press, Oxford, (1995) p. 1764-1767. M. Nagata, et al, (1995) J Immunol **155**: 2194-2202. H.E. Chuluyan, et al, (1995) J Immunol **155**: 3135-314.

**STORAGE CONDITIONS:** Store at 2 - 5°C. Freeze/Thawing is not recommended.

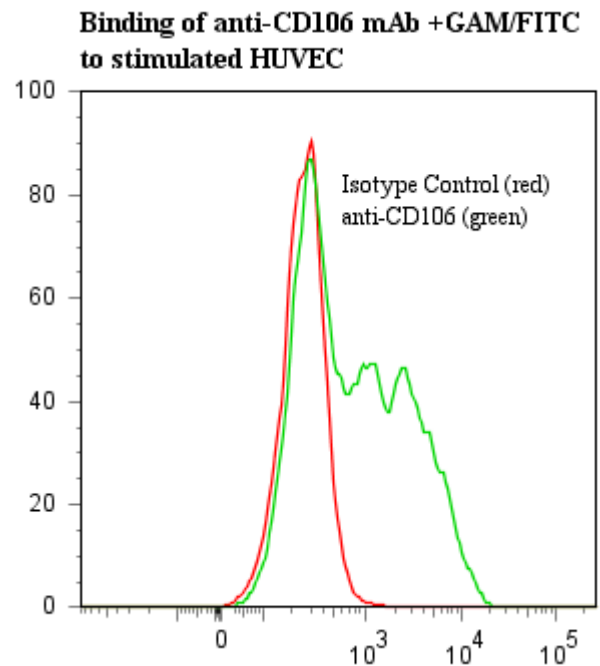
**PRODUCT STABILITY:** Product should retain activity for at least 12 months after shipping date when stored as recommended. Ship Date: \_\_\_\_\_

**BUFFER:** 50 mM Sodium Phosphate pH 7.5, 100 mM Potassium Chloride, 150mM NaCl, 0.5 mg/ml Gentamicin Sulfate (as a preservative).

**PRODUCTION:** Antibody was Protein A purified from (low FBS containing) tissue culture supernatant. Purity was >95% Immunoglobulin by SDS-PAGE with less than 1% Bovine Immunoglobulin.

**PERFORMANCE:** Cultured human umbilical cord vein endothelial cells were stimulated 4 hours with 10 ng/ml Phorbol 12-Myristate 13-Acetate. Cells were washed and incubated 45 minutes on ice with 80 µl of anti-CD106 antibody at 5 µg/ml. Cells were washed twice and incubated with 2<sup>o</sup> reagent Goat anti-Mouse IgG/FITC (Catalog #232-011) at a 1:60 dilution factor, after which they were washed three times, fixed and analyzed by FACS. A 49% population of the cells stained positive with a mean shift of 0.94 log<sub>10</sub> fluorescent units when compared to a Mouse IgG1 negative control (Catalog #278-010) at a similar concentration.

*\*This Product is intended for Laboratory Research use only.*



Ancell Corporation P.O. Box 87 243 Third Street North Bayport, MN 55003-0087 USA  
Phone: Toll free 800-374-9523 or 651-439-0835 Fax: 651-439-1940