

PERFORMANCE DATA SHEET

1818

Monoclonal anti-humanCD105(Endoglin)/Biotin*

mAb Name/Clone: SN6 / N1-3A1

Isotype: Mouse IgG1κ

Immunogen: Membrane preparation of human B-lineage leukemia cells

CATALOG#: 326-030

QUANTITY: 100 µg

CONCENTRATION: 1.0 mg/ml

INFORMATION: Human CD105 (endoglin) is a homodimeric membrane glycoprotein virtually restricted to endothelial cells, and present on some leukemia cells and minor subsets of bone marrow cells. CD105 binds to TGF-β1 and β3 with high affinity. Antibody SN6 recognizes human endoglin (CD105) homodimer with a molecular weight of about 160 kd. Antibody SN6 will augment binding of TGF-β1 to CD105 expressing leukemia cells.

References: Y. Haruta & B.K. Seon, (1986) Proc Natl Acad Sci USA **83**: 7898-7902. H. Hara, et al, (1988)Cancer Res **48**: 4673-4680. W.C. Biddle, et al, (1989) Leukemia Res **13**: 699-707. S. Cheifetz, et al, (1992) J Biol Chem **267**: 19027-19030. B.K. Seon, et al, (1995) Proc Am Assoc Can Res **36**: 23. Leukocyte Typing V (S.F. Schlossman, et al, eds.) Oxford University Press, Oxford, (1995) p. 1756-1761, 1762-1764. B.K. Seon, et al (1996) Tissue Antigens **48**: 417.

STORAGE CONDITIONS: Store at 2 - 5°C. Freeze/thawing not recommended.

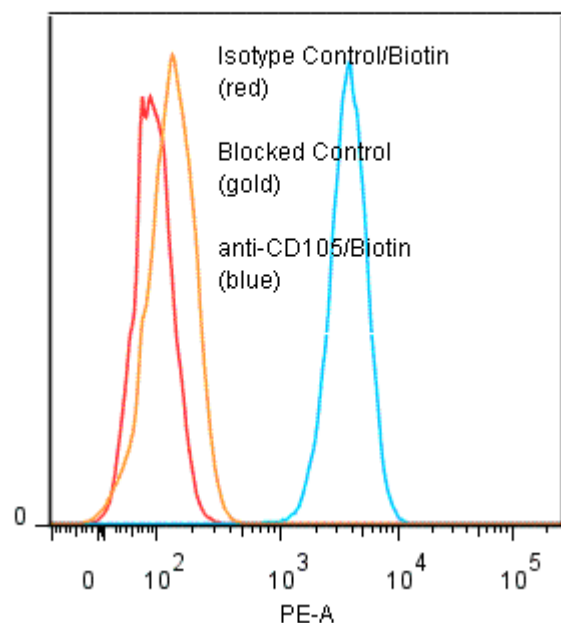
PRODUCT STABILITY: Product should retain activity for at least 12 months after shipping date when stored as recommended. Ship Date: _____

BUFFER: 50 mM Sodium Phosphate pH 7.5, 100 mM Potassium Chloride, 150mM NaCl, 5% Glycerol, 0.2% BSA, 0.04% NaN₃ (as a preservative).

PRODUCTION: Antibody from (low FBS containing) tissue culture supernatant was Protein A purified to >95% mouse immunoglobulin by SDS-PAGE (<1% bovine immunoglobulin), and reacted with NHS-Biotin. Unconjugated Biotin was removed from conjugate using a desalting column.

PERFORMANCE: Five x 10⁵ cultured Nalm-6 cells were washed and incubated 45 minutes on ice with 80 µl of anti-CD105/Biotin at a concentration of 10 µg/ml. Cells were then washed twice and incubated 45 minutes with 2^o reagent Streptavidin/R-Phycoerythrin (Catalog #253-050), after which they were washed three times, fixed and analyzed by FACS. Cells stained positive with a mean shift of 1.61 log₁₀ fluorescent units when compared to a Mouse IgG1/Biotin negative control (Catalog #278-030). Binding was blocked when cells were pre incubated 10 minutes with 20 µl of 0.5 mg/ml anti-CD105 antibody (Catalog #326-020).

Binding of anti-CD105/Biotin +SA/PE to human Nalm-6 cells



* *Research Use Only. Not for use in Diagnostic procedures.*