

PERFORMANCE DATA SHEET

1818

Monoclonal anti-human CD105(Endoglin)*

mAb Name/Clone: SN6/N1-3A1

Isotype: Mouse IgG1κ

Immunogen: Membrane preparation of human B-lineage leukemia cells

CATALOG#: 326-020

QUANTITY: 100 µg

CONCENTRATION: 1.0 mg/ml

INFORMATION: Human CD105 (endoglin) is a homodimeric membrane glycoprotein virtually restricted to endothelial cells, and present on some leukemia cells and minor subsets of bone marrow cells. CD105 binds to TGF-β1 and β3 with high affinity. Antibody SN6 recognizes human endoglin (CD105) homodimer with a molecular weight of about 160 kd. Antibody SN6 will augment binding of TGF-β1 to CD105 expressing leukemia cells.

References: Y. Haruta & B.K. Seon, (1986) Proc Natl Acad Sci USA **83**: 7898-7902. H. Hara, et al, (1988) Cancer Res **48**: 4673-4680. W.C. Biddle, et al, (1989) Leukemia Res **13**: 699-707. S. Cheifetz, et al, (1992) J Biol Chem **267**: 19027-19030. B.K. Seon, et al, (1995) Proc Am Assoc Can Res **36**: 23. Leukocyte Typing V (S.F. Schlossman, et al, eds.) Oxford University Press, Oxford, (1995) p. 1756-1761, 1762-1764. B.K. Seon, et al (1996) Tissue Antigens **48**: 417.

STORAGE CONDITIONS: Store at 2 - 5°C. Freeze/Thawing is not recommended.

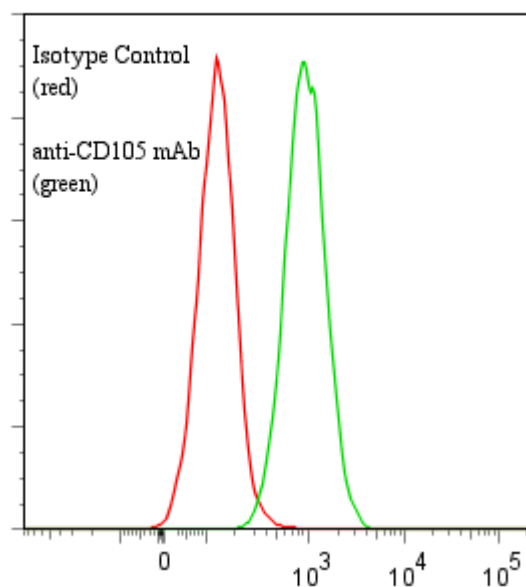
PRODUCT STABILITY: Product should retain activity for at least 12 months after shipping date when stored as recommended. Ship Date: _____

BUFFER: 50 mM Sodium Phosphate pH 7.5, 100 mM Potassium Chloride, 150mM NaCl, 0.5 mg/ml Gentamicin Sulfate (as a preservative).

PRODUCTION: Antibody was Protein A purified from (low FBS containing) tissue culture supernatant. Purity was >95% Immunoglobulin by SDS-PAGE and contains less than 1% Bovine Immunoglobulin.

PERFORMANCE: Five x 10⁵ cultured Nalm-6 human tumor cells were washed and incubated 45 minutes on ice with 80 µl of anti-CD105 antibody at a concentration of 10 µg/ml. Cells were washed twice and incubated with 2^o reagent Goat anti-Mouse IgG/FITC (Catalog #232-011), after which they were washed three times, fixed and analyzed using by FACS. Cells stained positive with a mean shift of 0.79 log₁₀ fluorescent units when compared to a Mouse IgG1 negative control (Catalog #278-010).

Binding of anti-CD105 mAb + GAM/FITC to human Nalm-6 cells



* Research Use Only. Not for use in Diagnostic procedures.