

PERFORMANCE DATA SHEET

2149

Monoclonal anti-human CD56 (NCAM)//FITC*

mAb name/Clone: ANC7C7

Isotype: Mouse IgG1k

Immunogen: Recombinant human CD56 (truncated domains 1-4 only)

CATALOG#: 308-040

QUANTITY: 120 tests

VOLUME IN VIAL: 0.2ml

WORKING DILUTION: 1:50 (or use 1.6µl of concentrated stock per 5 x 10⁵-cell test)

INFORMATION Human CD56 is an adhesion molecule from the Ig superfamily which is restricted to NK cells in the immune system. It is believed that NK cells form a first line of defense against tumor cells and cells infected with bacteria and viruses. Antibody ANC7C7 recognizes an epitope within the first four Ig-like domains of the CD56 molecule.

References: S.P. Bourne, et al, (1991) J Neuro-Oncol **10**: 111-119. T.L. Whiteside and R.B. Herberman (1994) Clinical & Diagnostic Laboratory Immunology. H. Spits, et al, (1995) Blood **85**: 2654-2670.

STORAGE CONDITIONS: Store at 2 - 5°C. Freeze/Thawing is not recommended. Protect from light.

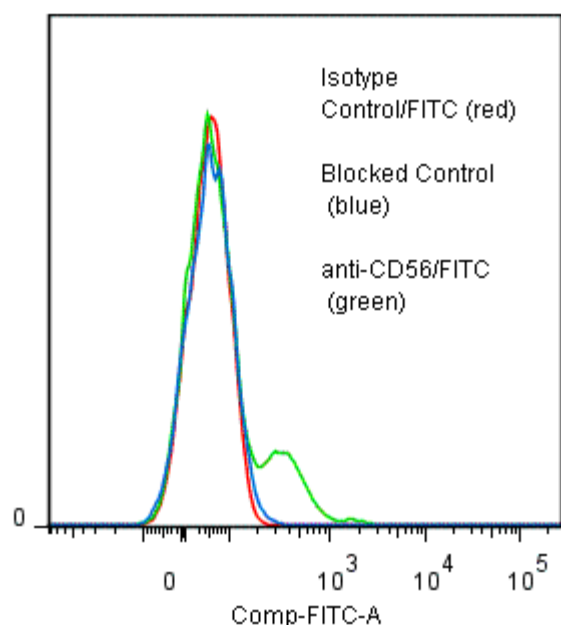
PRODUCT STABILITY: Product should retain activity for at least 12 months after shipping date when stored as recommended. Ship Date: _____

BUFFER: 50 mM Sodium Phosphate pH 7.5, 100 mM Potassium Chloride, 150mM NaCl, 5% Glycerol, 0.2% BSA, 0.04% NaN₃ (as a preservative).

PRODUCTION: Protein A purified antibody from tissue culture supernatant was reacted with FITC. Unconjugated FITC was separated from antibody/FITC conjugate by desalting column. The antibody/FITC conjugate is at approximately **0.5 mg/ml** with a FITC/antibody molar ratio of 5.7.

PERFORMANCE: Five x 10⁵ ficoll prepared human peripheral blood mononuclear cells per tube were washed and pre incubated 5 minutes with 20 µl of 250 µg/ml human IgG (to block nonspecific binding) after which they were incubated 45 minutes on ice with 80 µl of product at a dilution factor of 1:50 (10µg/ml). Cells were washed three times, fixed and analyzed by FACS. A net **13%** sub population of the cells stained positive with a mean shift of **1.04 log₁₀** fluorescent units when compared to a Mouse IgG1/FITC negative control (Catalog #278-040) at a similar concentration. Binding was blocked when pre incubated 10 minutes with 20 µl of 0.5 mg/ml anti-CD56 antibody (Catalog #308-020).

Binding of anti-CD56/FITC to human PBL



* **Research Use Only. Not for use in Diagnostic procedures.**