

PERFORMANCE DATA SHEET

1919

Monoclonal anti- human CD81 (TAPA-1)/R-PE*

mAb name/Clone: 1.3.3.22

Isotype: Mouse IgG1

Immunogen: Human B cell line from Burkitt lymphoma

CATALOG#: 302-050

QUANTITY: 120 tests

VOLUME IN VIAL: 0.2 ml

WORKING DILUTION: 1:50 (or use 1.6µl of concentrated stock per 5 x 10⁵-cell test)

INFORMATION: Human CD81 is a member of the tetraspan family of leukocyte cell surface molecules which are involved in signal transduction, cell-cell adhesion, and cellular activation (1). Association of CD81 with integrins appears to be functionally important in the regulation of cell adhesion and activation (2, 3). Recent work with CD81-null mice indicates CD81 is important for development of humoral immune response (4). Antibody 1.3.3.22 reacts with the 24 kd tetraspan CD81 molecule.

References: (1) Leukocyte Typing V (S.F. Schlossman, et al, eds.) Oxford University Press, Oxford (1995) p. 684-691. (2) B.A. Mannion, et al, (1996) J Immunol **157**: 2039-2047. (3) S.C. Todd, et al, (1996) J Exp Med **184**: 2055-2060. 4.) H.T. Maecker & S. Levy (1997) J Exp Med **185**: 1505-1510.

STORAGE CONDITIONS: Store at 2 - 5°C. Do not freeze! Protect from light.

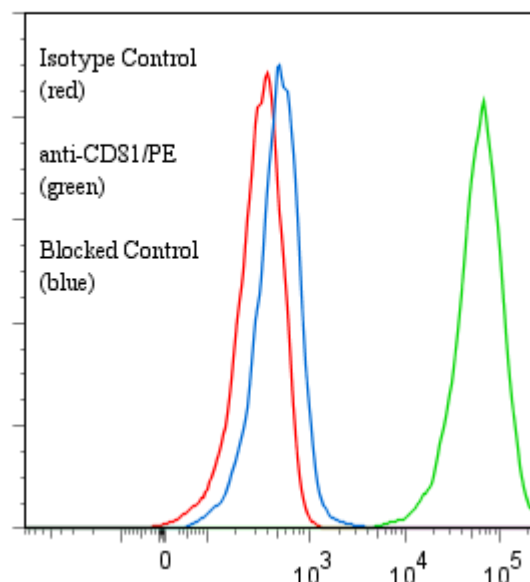
PRODUCT STABILITY: Product should retain activity for at least 12 months after shipping date when stored as recommended. Ship Date: _____

BUFFER: 50 mM Sodium Phosphate pH 7.5, 500 mM Potassium Chloride, 150mM NaCl, 15% Glycerol, 0.2% BSA, 0.04% NaN₃ (as a preservative).

PRODUCTION: Protein A purified antibody from tissue culture supernatant was conjugated to R-Phycoerythrin through a sulfo-ester linkage. Unconjugated antibody was removed using size exclusion chromatography. Antibody conjugate is at **0.5 mg/ml** with an A₅₆₅/A₂₈₀ ratio of 2.78.

PERFORMANCE: Five x 10⁵ cultured human **Raji** cells per tube were washed incubated 45 minutes on ice with 80µl of anti-CD81/R-PE at a **1:50** dilution (10µg/ml). Cells were washed three times, fixed and analyzed by FACS. Cells stained positive with a mean shift of **2.11** log₁₀ fluorescent units when compared to a Mouse IgG1/R-PE negative control (Catalog #278-050) at a similar concentration. Binding was blocked when cells were pre incubated 10 minutes with 20µl of 0.5 mg/ml anti-CD81 antibody (Catalog #302-020).

Binding of anti-CD81/PE to human Raji Cells



* **Research Use Only. Not for use in Diagnostic procedures.**