

**PERFORMANCE DATA SHEET**

2129

**Monoclonal anti-human CD81 (TAPA-1)/FITC\***

**mAb name/Clone:** 1.3.3.22

**Isotype:** Mouse IgG1

**Immunogen:** Human B cell line from Burkitt lymphoma

**CATALOG#:** 302-040

**QUANTITY:** 120 tests

**VOLUME IN VIAL:** 0.2ml

**WORKING DILUTION:** 1:50 (or use 1.6µl of concentrated stock per 5 x 10<sup>5</sup>-cell test)

**INFORMATION:** Human CD81 is a member of the tetraspan family of leukocyte cell surface molecules which are involved in signal transduction, cell-cell adhesion, and cellular activation (1). Association of CD81 with integrins appears to be functionally important in the regulation of cell adhesion and activation (2, 3). Recent work with CD81-null mice indicates CD81 is important for development of humoral immune response (4). Antibody 1.3.3.22 reacts with the 24 kd tetraspan CD81 molecule.

**References:** (1) Leukocyte Typing V (S.F. Schlossman, et al, eds.) Oxford University Press, Oxford (1995) p. 684-691. (2) B.A. Mannion, et al, (1996) J Immunol **157**: 2039-2047. (3) S.C. Todd, et al, (1996) J Exp Med **184**: 2055-2060. 4.) H.T. Maecker & S. Levy (1997) J Exp Med **185**: 1505-1510.

**STORAGE CONDITIONS:** Store at 2 - 5°C. Freeze/Thawing is not recommended.

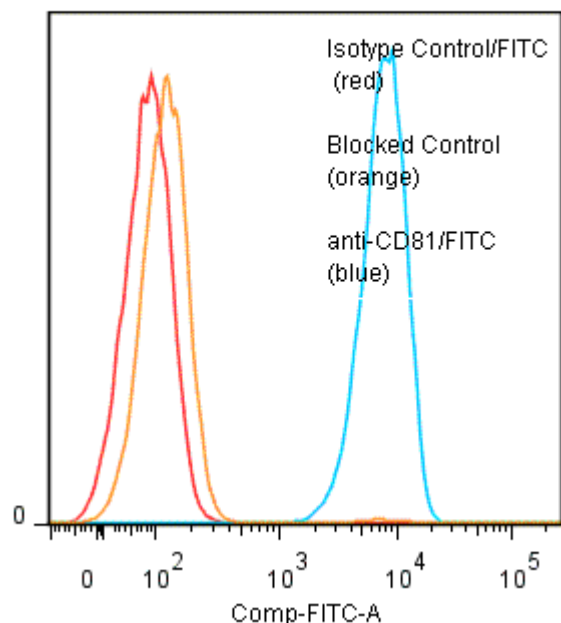
**PRODUCT STABILITY:** Product should retain activity for at least 12 months after shipping date when stored as recommended. Ship Date: \_\_\_\_\_

**BUFFER:** 50 mM Sodium Phosphate pH 7.5, 100 mM Potassium Chloride, 150mM NaCl, 5% Glycerol, 0.2% BSA, 0.04% Na<sub>3</sub> (as a preservative).

**PRODUCTION:** Protein A purified antibody from tissue culture supernatant was reacted with FITC. Unconjugated FITC was separated from antibody/FITC conjugate by desalting column. The antibody/FITC conjugate is at 0.5 mg/ml with a Fluorescein/IgG molar ratio of 6.9.

**PERFORMANCE:** Five x 10<sup>5</sup> cultured human CEM cells were washed and incubated 45 minutes on ice with 80 µl of anti-CD81/FITC at a 1:50 dilution factor (10µg/ml). Cells were washed three times, fixed and analyzed by FACS. Cells stained positive with a mean shift of 1.98 log<sub>10</sub> fluorescent units when compared to a Mouse IgG1/FITC negative control (Catalog #278-040) at a similar concentration. Binding was blocked when cells were pre incubated 10 minutes with 20 µl of 0.5 mg/ml anti-CD81 antibody (Catalog #302-020).

**Binding of anti-CD81/FITC to human CEM cells**



\* **Research Use Only. Not for use in Diagnostic procedures.**