

PERFORMANCE DATA SHEET

3034

Monoclonal anti-human CD40*

mAb name/Clone: EA-5

Isotype: Mouse IgG1

Immunogen: Murine L cell transfectants expressing human CD40

CATALOG#: 300-820 (Preservative-free)

QUANTITY: 100 µg

CONCENTRATION: 1.0 mg/ml

INFORMATION: Human CD40 is a member of the tumor necrosis factor (TNF) receptor family and is present on all B cells except plasma cells. CD40 is also found on some epithelial cells, carcinomas and lymphoid dendritic cells. CD40 plays an important role in B cell activation and the interaction with its ligand (CD40 Ligand) is essential for isotype switching. Antibody EA-5 recognizes the CD40 molecule of about 44 kd. Binding of cross linked EA-5 will partially activate B cells.

References: C.L. Law, B. Worman & T.W. LeBien, (1990) *Leukemia* **4**: 732-738. W.C. Fanslow, et al, (1992) *J Immunol* **149**: 655-660. A.W. Larson & T.W. LeBien, (1994) *J Immunol* **153**: 584-594. *Leukocyte Typing V* (S.F. Schlossman, et al, eds.) Oxford University Press, Oxford, (1995) p. 547-556. E. Lindhout, (1995) *J Exp Med* **181**: 1985-1995.

STORAGE CONDITIONS: Store at 2 - 5°C. Freeze/Thawing is not recommended. Open under aseptic conditions.

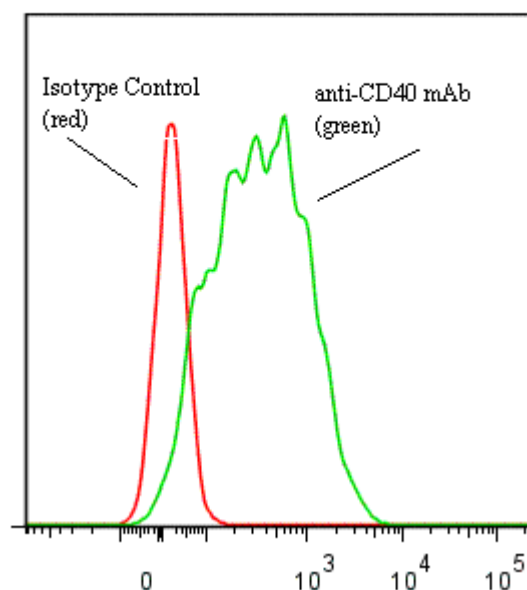
PRODUCT STABILITY: Product should retain activity for at least 12 months after shipping date when stored as recommended. Ship Date: _____

BUFFER: 50 mM Sodium Phosphate pH 7.5, 100 mM Potassium Chloride, 150mM NaCl.

PRODUCTION: Antibody was Protein A purified from (low FBS containing) tissue culture supernatant. Purity was >95% Immunoglobulin by SDS-PAGE and contains less than 1% Bovine Immunoglobulin. Product was 0.2µ sterile filtered and vialled under aseptic conditions.

PERFORMANCE: Five x 10⁵ cultured **Raji** human tumor cells were incubated 45 minutes on ice with 80 µl of anti-CD40 antibody at 5 µg/ml. Cells were washed twice and incubated with 2^o reagent Goat anti-Mouse IgG/FITC (Catalog #232-011), after which they were washed three times, fixed and analyzed by FACS. Cells stained positive with a mean shift of 1.66 log₁₀ fluorescent units when compared to a Mouse IgG1 negative control (Catalog #278-010).

Binding of anti-CD40 mAb + GAM/FITC to human Raji cells



* Research Use Only. Not for use in Diagnostic procedures.