

PERFORMANCE DATA SHEET
1818

Human IgG1κ/R-PE*

From Human Myeloma Plasma

CATALOG#: 295-050

CONCENTRATION: 0.5 mg/ml

QUANTITY: 100 µg

INFORMATION: Human IgG1κ from human myeloma plasma is used as a negative control for work involving human IgG1 isotype antibodies or recombinant proteins.

STORAGE CONDITIONS: *Store at 2 - 5° C.* Freeze/Thawing is not recommended. Protect from light.

PRODUCT STABILITY: Product should retain activity for at least 12 months after shipping date when stored as recommended. Ship Date: _____

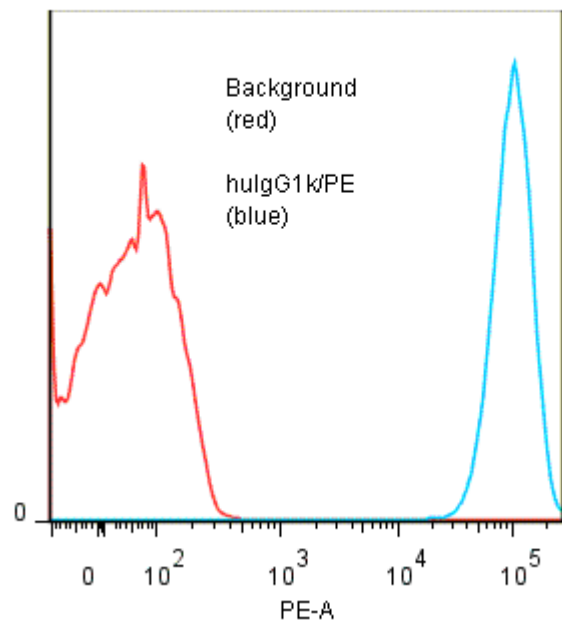
BUFFER: 50 mM Sodium Phosphate pH 7.5, 100 mM Potassium Chloride, 150mM NaCl, 5% Glycerol, 0.2% BSA, 0.04% NaN₃ (as a preservative).

PRODUCTION: Protein A purified antibody from tissue culture supernatant was conjugated to R-Phycoerythrin through a sulfo-ester linkage. Unconjugated antibody was removed using size exclusion chromatography. Antibody conjugate is at **0.5 mg/ml** with PE : mAb molar ratio of 0.7

POTENTIAL BIOHAZARD: Handle Product as if capable of transmitting infectious agents. Source material was tested and found negative for antibody to HIV and HbsAg.

PERFORMANCE: huIgG1k/PE was tested for binding to anti-human IgG (clone ICO-97)-coated 4µ beads in FACS (*Inquire*). Approximately 5 x 10⁵ beads per tube were spun down and incubated 45 minutes at 4°C with 80µl of huIgG1k/PE at a **1:50** dilution (10µg/ml). Tubes were washed twice, fixed and analyzed by FACS. Beads stained positive with a mean shift of **3.3** log₁₀ fluorescent units when compared to a buffer background. Binding was blocked when beads were pre incubated 10 minutes with a 10-fold excess of unlabeled huIgG1k antibody (Catalog #295-010).

Binding of huIgG1k/PE to anti-human IgG(clone ICO-97)-coated CML beads



* *Research Use Only. Not for use in Diagnostic procedures.*

Ancell Corporation P.O. Box 87 Bayport, MN 55003-0087 USA
Phone: Toll free 800-374-9523 or 651-439-0835 Fax: 651-439-1940