

PERFORMANCE DATA SHEET
1818

Human IgG1 κ /R-PE*

From Human Myeloma Plasma

CATALOG#: 295-050

CONCENTRATION: 0.5 mg/ml

QUANTITY: 100 μ g

INFORMATION: Human IgG1 κ from human myeloma plasma is used as a negative control for work involving human IgG1 isotype antibodies or recombinant proteins.

STORAGE CONDITIONS: Store at 2 - 5^o C. Freeze/Thawing is not recommended. Protect from light.

PRODUCT STABILITY: Product should retain activity for at least 12 months after shipping date when stored as recommended. Ship Date: _____

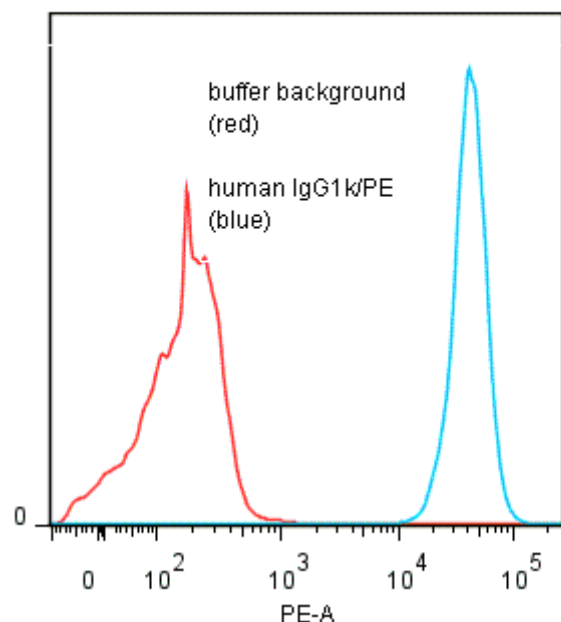
BUFFER: 50 mM Sodium Phosphate pH 7.5, 100 mM Potassium Chloride, 150mM NaCl, 5% Glycerol, 0.2% BSA, 0.04% NaN₃ (as a preservative).

PRODUCTION: Protein A purified antibody from tissue culture supernatant was conjugated to R-Phycoerythrin through a sulfo-ester linkage. Unconjugated antibody was removed using size exclusion chromatography. Antibody conjugate is at **0.5 mg/ml** with PE : mAb molar ratio of 0.6

POTENTIAL BIOHAZARD: Handle Product as if capable of transmitting infectious agents. Source material was tested and found negative for antibody to HIV and HbsAg.

PERFORMANCE: huIgG1 κ /PE was tested for binding to anti-human IgG (clone ICO-97)-coated 4 μ beads in FACS (*Inquire*). Approximately 5 x 10⁵ beads per tube were spun down and incubated 45 minutes at 4^oC with 80 μ l of huIgG1 κ /PE at a **1:50** dilution (10 μ g/ml). Tubes were washed twice, fixed and analyzed by FACS. Beads stained positive with a mean shift of **2.8** log₁₀ fluorescent units when compared to a buffer background. Binding was blocked when beads were pre incubated 10 minutes with 20 μ l of 0.5 mg/ml unlabeled huIgG1 κ antibody (Catalog #295-010).

Binding of human IgG1 κ /PE to anti-human IgG (clone ICO-97)-coated CML beads



* *Research Use Only. Not for use in Diagnostic procedures.*