

PERFORMANCE DATA SHEET
3204

Human IgG1κ/Biotin*

From Human Myeloma Plasma

CATALOG#: 295-030

CONCENTRATION: 1.0 mg/ml

QUANTITY: 100 ug

INFORMATION: Human IgG1κ from human myeloma plasma is used as a negative control for work involving human IgG1 isotype antibodies or recombinant proteins.

STORAGE CONDITIONS: *Store at 2 - 5° C. Freeze/Thawing is not recommended.*

PRODUCT STABILITY: Product should retain activity for at least 12 months after shipping date when stored as recommended. Ship Date:_____

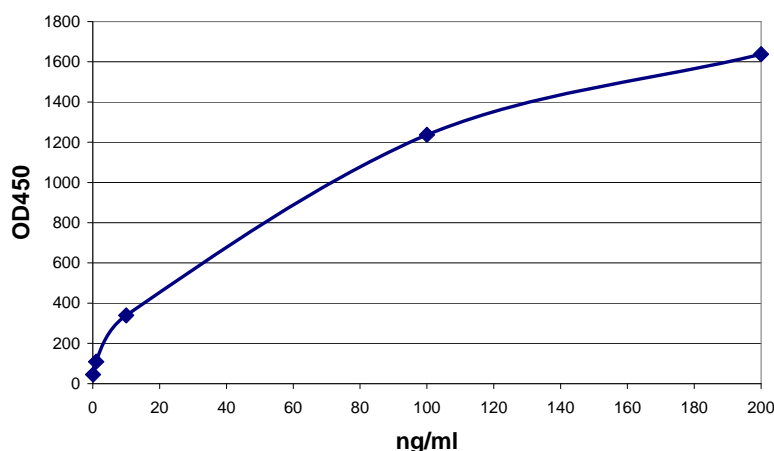
BUFFER: 50 mM Sodium Phosphate pH 7.5, 100 mM Potassium Chloride, 150mM NaCl, 5% Glycerol, 0.2% BSA, 0.04% NaN₃ (as a preservative).

PRODUCTION: Antibody from human plasma was purified to >95% by fractionation, ion-exchange and affinity chromatography and reacted with NHS-Biotin. Unconjugated Biotin was removed from conjugate using a desalting column.

POTENTIAL BIOHAZARD: Handle Product as if capable of transmitting infectious agents. Source material was tested and found negative for HbsAg and antibody to HIV1/2 and HCV.

PERFORMANCE: Human IgG1κ was detectable in EIA at **10 ng/ml** using anti-human IgG (clone ICO-97, catalog #139-020) for capture and Streptavidin/HRP for detection, with a **signal to noise ratio of 7.5**.

Binding of human IgG1κ/Biotin in EIA



** Research Use Only. Not for use in Diagnostic procedures.*