

PERFORMANCE DATA SHEET

2217

Monoclonal anti-human CD268(BAFFR)/FITC*

mAb name/Clone: ANC268.2/6E6

Isotype: Mouse IgG1 κ

Immunogen: Recombinant human CD268

CATALOG#: 275-040

QUANTITY: 120 tests

VOLUME IN VIAL: 0.2ml

WORKING DILUTION: 1:50 (or use 1.6 μ l of concentrated stock per 5 x 10⁵-cell test)

INFORMATION : Human CD268 (BAFFR, BAFF receptor) is a type I TNF superfamily receptor member #13c. It is highly specific for CD257 (BAFF), which itself does not bind to other receptors TACI, and BCMA. CD268 expressed on B cells and its ligation by CD257 (BAFF) regulates maturation (1). Antibody ANC268.2 binds to recombinant CD268 (but not CD269) in EIA and native CD268 expressed on Raji cell surface.

REFERENCES: 1) [Thompson, J S, C Ambrose, et al. \(2001\) Science 293\(5537\): 2108-2111.](#)

STORAGE CONDITIONS: Store at 2 - 5°C. Freeze/Thawing is not recommended. Protect from light.

PRODUCT STABILITY: Product should retain activity for at least 12 months after shipping date when stored as recommended. Ship Date: _____

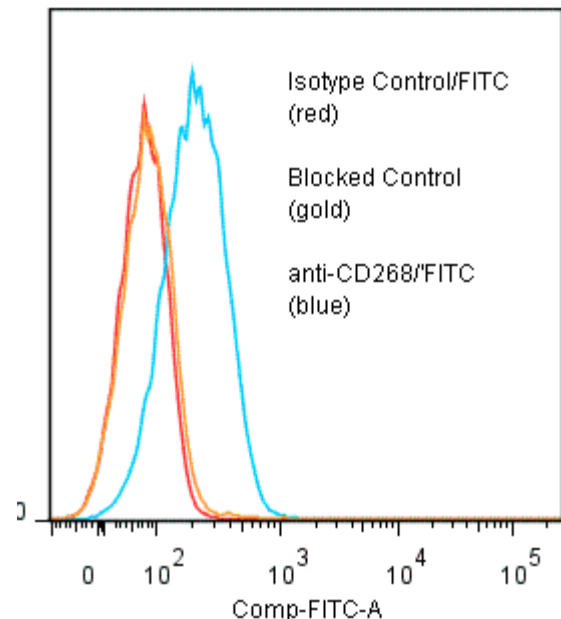
BUFFER: 50 mM Sodium Phosphate pH 7.5, 100 mM Potassium Chloride, 150mM NaCl, 5% Glycerol, 0.2% BSA, 0.04% NaN₃ (as a preservative).

PRODUCTION: Protein A purified antibody from tissue culture supernatant was reacted with FITC.

Unconjugated FITC was separated from antibody/FITC conjugate by desalting column. The antibody/FITC conjugate is at approximately 0.5 mg/ml with a Fluorescein/IgG molar ratio of 3.6.

PERFORMANCE: Five x 10⁵ cultured human **Raji** cells were pre incubated with 20 μ l of 300 μ g/ml human IgG (to block non specific binding), after which they were incubated 45 minutes on ice with 80 μ l of product at a 1:50 dilution (10 μ g/ml). They were then washed three times, fixed and analyzed by FACS. Cells stained positive with a mean shift of log₁₀ fluorescent units when compared to a Mouse IgG1/FITC negative control (Catalog # 278-040). Binding was blocked when cells were pre incubated 10 minutes with 20 μ l of 0.5 mg/ml anti-CD268 antibody (Catalog #275-020).

Binding of anti-CD268(BAFFR)/FITC to human Raji cells



**Research Use Only. Not for use in Diagnostic procedures.*