

PERFORMANCE DATA SHEET
2002

Monoclonal anti-human CD271(NGFR)*

mAb name/Clone: ANC271/3D7

Isotype: Mouse IgG1 κ

Immunogen: Recombinant soluble human CD271

CATALOG#: 271-020

QUANTITY: 100 μ g

CONCENTRATION: 1.0 mg/ml

INFORMATION: The p75 low affinity human Nerve Growth Factor receptor CD271(NGRF, TNFRSF16) is expressed on a variety of tissue types including a subset of splenic and nodal lymphocytes. Presence of this receptor supports uptake of intracellular calcium, but not mobilization (3). CD271 is a stem cell marker for hematopoietic(5,6,7), stromal (8) as well as cancer cells (9,10). CD271 has been reported to inhibit differentiation of mesenchymal cells into various lineages(11).

Antibody ANC271/3D7 binds to recombinant CD271-muIg (cat# 527-020) in EIA, and to endogenous CD271 on cell surface of human Reh cells.

REFERENCES: 1) Brodie C, E W Gelfand (1992) *Journal of Immunology*. **148**(11): 3492-3497. 2) Fantini F, O. Johansson (1992) *Journal of Investigative Dermatology*. **99**(6): 734-742. 3) Jiang H, G Gurogg, et al.(1999) *J Biol Chem* **274**(37): 26209-16. 4) Khwaja F, D Djakiew, et al (2004) *Cancer Res* **64**(17): 6207-13. 5) [Flores-Torales E, Cuneo-Pareto S, et al. \(2010\) *Folia Histochem Cytobiol.* **48**\(4\):682-6.](#) 6) [Kuçi S, Bader P, et al. \(2010\) *Haematologica.* **95**\(4\):651-9.](#) 7) [Hermida-Gómez T, Blanco FJ, et al. \(2011\) *Tissue Eng Part A.* **17**\(7-8\):1169-79.](#) 8) [Jones E, McGonagle D, et al. \(2010\) *Arthritis Rheum.* **62**\(7\):1944-54.](#) 9) [Boiko AD, Weissman IL, et al. \(2010\) *Nature* **466**\(7302\):133-7.](#) 10) [Civenni G, Sommer L, et al. \(2011\) *Cancer Res.* **71**\(8\):3098-109.](#) 11) [Mikami Y, Honda MJ, et al. \(2011\) *Stem Cells Dev.* **20**\(5\):901-13.](#)

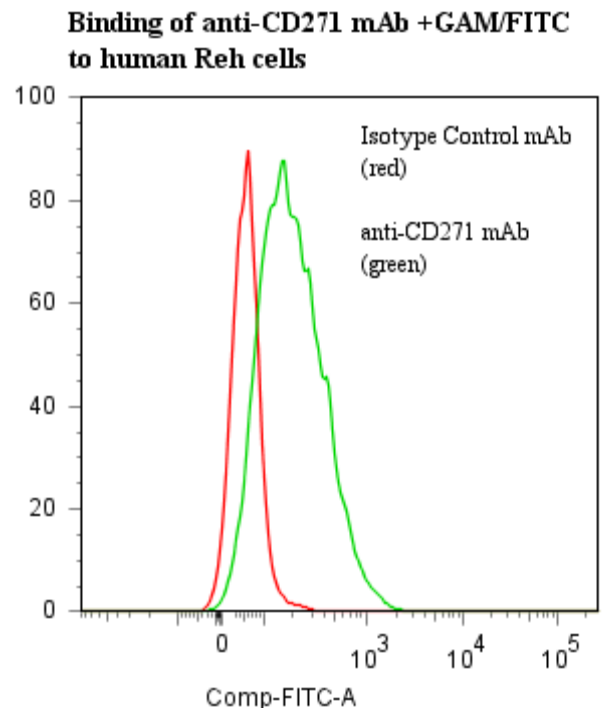
STORAGE CONDITIONS: Store at 2 - 5°C. Freeze/Thawing is not recommended.

PRODUCT STABILITY: Product should retain activity for at least 12 months after shipping date when stored as recommended. Ship Date: _____

BUFFER: 50 mM Sodium Phosphate pH 7.5, 100 mM Potassium Chloride, 150mM NaCl, 0.5 mg/ml Gentamicin Sulfate (as a preservative).

PRODUCTION: Antibody was Protein A purified from (low FBS containing) tissue culture supernatant. Purity was >95% Immunoglobulin by SDS-PAGE with less than 1% Bovine Immunoglobulin.

PERFORMANCE: Five x 10⁵ cultured human Reh cells per tube were pelleted and pre incubated 5 minutes with 20 μ l of human IgG at 300 μ g/ml (to reduce non specific binding) after which they were washed and incubated 45 minutes on ice with 80 μ l of anti-CD271 antibody(ANC271/3D7) at **5 μ g/ml**. Cells were washed twice and incubated with 2^o reagent Goat anti-Mouse IgG/FITC (Catalog #232-011) after which they were washed three times, fixed and analyzed by FACS. Cells stained positive with a mean shift of **0.76** log₁₀ fluorescent units when compared to a Mouse IgG1 negative control (Catalog #278-010) at a similar concentration.



***For Research Use Only. Not For Use In Diagnostic Procedures**