

**PERFORMANCE DATA SHEET**

2217

**Monoclonal anti-human CD269(BCMA)/R-PE\***

**mAb name/Clone:** ANC3B1

**Isotype:** Mouse IgG1κ

**Immunogen:** Recombinant human CD269

**CATALOG#:** 269-050

**QUANTITY:** 120 tests

**VOLUME IN VIAL:** 0.2 ml

**WORKING DILUTION:** 1:50 (or use 1.6µl of concentrated stock per 5 x 10<sup>5</sup>-cell test)

**INFORMATION :** Human CD269 (BCMA, B cell maturation antigen) is predominantly expressed by mature B cells and is a type I TNF superfamily receptor member (TNFRSF17). It is highly specific for its ligand CD257 (BAFF, Blys). Antibody ANC3B1 binds to recombinant CD269 (but not CD268) in EIA and native CD269 expressed on Raji cell surface. It blocks binding of recombinant soluble CD257(BAFF)trn-muCD8(cat# 525-020) to recombinant CD269(BCMA)-muIg (cat# 519-020) in EIA.

**REFERENCES:** 1) Schneider P., J. Tschopp, et al. *J. Exp. Med.* 1999, 189(11):1747-1756

**STORAGE CONDITIONS:** Store at 2 - 5°C. Do not freeze! Protect from light.

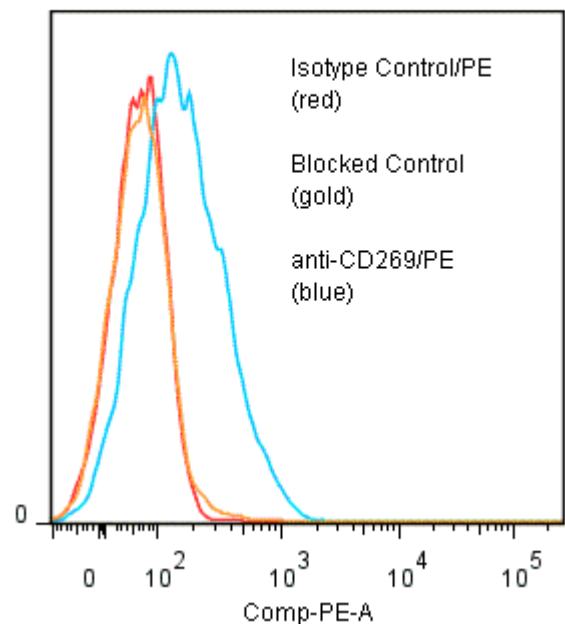
**PRODUCT STABILITY:** Product should retain activity for at least 12 months after shipping date when stored as recommended. Ship Date: \_\_\_\_\_

**BUFFER:** 50 mM Sodium Phosphate pH 7.5, 500 mM Potassium Chloride, 150mM NaCl, 15% Glycerol, 0.2% BSA, 0.04% NaN<sub>3</sub> (as a preservative).

**PRODUCTION:** Protein A purified antibody from tissue culture supernatant was conjugated to R-Phycoerythrin through a sulfo-ester linkage. Unconjugated antibody was removed using size exclusion chromatography. Antibody conjugate is at 500 µg/ml with an A<sub>565</sub>/A<sub>280</sub> ratio of 2.63.

**PERFORMANCE:** Five x 10<sup>5</sup> cultured Raji cells were washed and pre incubated ~5 minutes with 20 µl of 250 µg/ml human IgG (to block nonspecific binding) after which they were incubated 45 minutes on ice with 80 µl of anti-CD269/R-PE at a dilution factor of 1:50 (10 µg/ml). Cells were washed three times, fixed and analyzed by FACS. Cells stained positive with a mean shift of 0.51 log<sub>10</sub> fluorescent units when compared to a Mouse IgG1/R-PE negative control (Catalog #278-050) at a similar concentration. Binding was blocked when cells were pre incubated 10 minutes with 20 µl of 0.5 mg/ml anti-CD269 antibody (Catalog #269-020).

**Binding of anti-CD269(BCMA)/R-PE to human Raji cells**



*\*Research Use Only. Not for use in Diagnostic procedures.*