

# PERFORMANCE DATA SHEET

2247

## Monoclonal anti-human CD62L (L-selectin)\*

**mAb name/Clone:** LAM1-116

**Isotype:** Mouse IgG2aκ

**Immunogen:** Mouse pre-B cells expressing human L-selectin

**CATALOG#:** 261-820 (Preservative-free)

**QUANTITY:** 100 µg

**CONCENTRATION:** 1.0 mg/ml

**INFORMATION:** Human CD62L is an adhesion molecule found on most leukocytes and plays a primary role in mediating initial leukocyte interaction with activated vascular endothelium (1). Human CD62L has signal transduction functions where engagement leads to increased calcium levels and upregulated expression of certain integrins (2). Antibody LAM1-116 recognizes the lectin binding domain of CD62L (2). Antibody LAM1-116 blocks CD62L function and induces expression of beta-1 and beta-2 integrins (1).

**References:** (1). T.A. Springer, (1995) Annu Rev Physiol 57: 827-872. (2). D.A. Steeber, et al, (1997) J Immunol 159: 952-963. (3). Leukocyte Typing VI (T. Kishimoto, et al, eds.) Garland Publishing, Inc., New York (1997) p. 420-424.

**STORAGE CONDITIONS:** Store at 2 - 5°C. Freeze/Thawing is not recommended. *Open under aseptic conditions.*

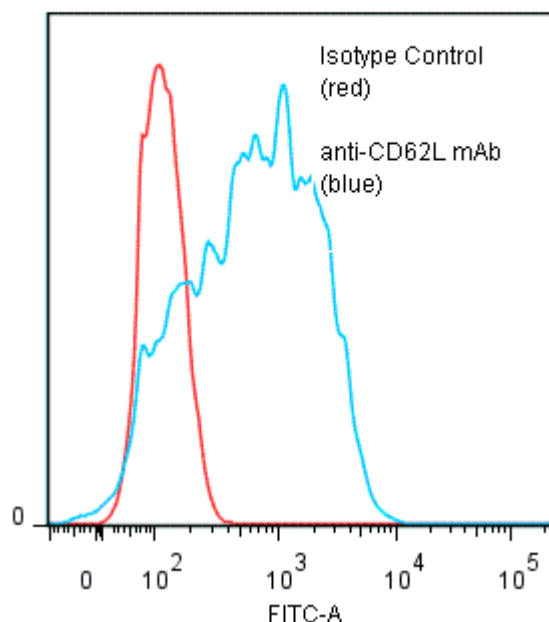
**PRODUCT STABILITY:** Product should retain activity for at least 12 months after shipping date when stored as recommended. Ship Date: \_\_\_\_\_

**BUFFER:** 50 mM Sodium Phosphate pH 7.5, 100 mM Potassium Chloride, 150mM NaCl.

**PRODUCTION:** Antibody was Protein A purified from (low FBS containing) tissue culture supernatant. Purity was >95% Immunoglobulin by SDS-PAGE and contains less than 1% Bovine Immunoglobulin. Product was 0.2µ sterile filtered and vialled under aseptic conditions.

**PERFORMANCE:** Five x 10<sup>5</sup> cultured human Raji cells per tube were washed and incubated 45 minutes on ice with 80 µl of anti-CD62L antibody at a concentration of 5 µg/ml. Cells were washed twice and incubated with 2<sup>o</sup> reagent Goat anti-Mouse IgG/FITC (Catalog #232-011), after which they were washed three times, fixed and analyzed by FACS. Cells stained positive with a mean shift of 0.84 log<sub>10</sub> fluorescent units when compared to a Mouse IgG2a negative control (Catalog #281-010).

**Binding of anti-CD62L mAb +GAM/FITC to human Raji cells**



*\*Research use only. Not for use in Diagnostic procedures.*