

PERFORMANCE DATA SHEET
2302

Monoclonal anti-human CD62L (L-selectin)/APC*

mAb name/Clone: LAM1-116

Isotype: Mouse IgG2aκ

Immunogen: Mouse pre-B cells expressing human L-selectin

CATALOG#: 261-060

QUANTITY: 120 tests

VOLUME IN VIAL: 0.2 ml

WORKING DILUTION: 1:50 (or use 1.6µl of concentrated stock per 5 x 10⁵-cell test)

INFORMATION: Human CD62L is an adhesion molecule found on most leukocytes and plays a primary role in mediating initial leukocyte interaction with activated vascular endothelium (1). Human CD62L has signal transduction functions where engagement leads to increased calcium levels and upregulated expression of certain integrins (2). Antibody LAM1-116 recognizes the lectin binding domain of CD62L (2). Antibody LAM1-116 blocks CD62L function and induces expression of beta-1 and beta-2 integrins (1).

References: (1). T.A. Springer, (1995) Annu Rev Physiol 57: 827-872. (2). D.A. Steeber, et al, (1997) J Immunol 159: 952-963. (3). Leukocyte Typing VI (T. Kishimoto, et al, eds.) Garland Publishing, Inc., New York (1997) p. 420-424.

STORAGE CONDITIONS: Store at 2 - 5°C. Do not freeze! Protect from light.

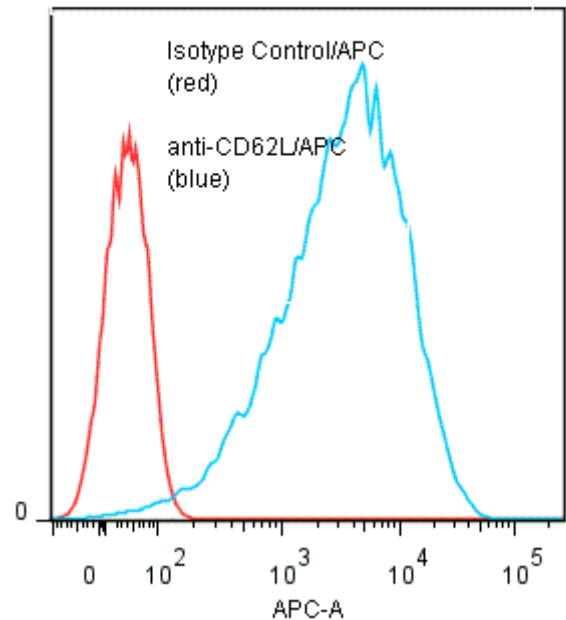
PRODUCT STABILITY: Product should retain activity for at least 12 months after shipping date when stored as recommended. Ship Date: _____

BUFFER: 50 mM Sodium Phosphate pH 7.5, 500 mM Potassium Chloride, 150mM NaCl, 15% Glycerol, 0.2% BSA, 0.04% NaN₃ (as a preservative).

PRODUCTION: Protein A purified antibody from tissue culture supernatant was conjugated to Allophycocyanin through a sulfo-ester linkage. Unconjugated antibody was removed using size exclusion chromatography. Antibody conjugate is at 0.5 mg/ml with an A₆₅₀/A₂₈₀ ratio of 2.21.

PERFORMANCE: Five x 10⁵ cultured human Raji cells per tube were washed and incubated 45 minutes on ice with 80 µl of anti-CD62L/APC at a 1:50 dilution factor (10 µg/ml). They were then washed three times, fixed and analyzed by FACS. Cells stained positive with a mean shift of 2.1 log₁₀ fluorescent units when compared to a Mouse IgG2a/APC negative control (Catalog #281-060) at a similar concentration. Binding was blocked when cells were pre incubated 10 minutes with 20 µl of 0.5 mg/ml anti-CD62L antibody (Catalog #261-020).

Binding of anti-CD62L/APC to Raji cells



**Research use only. Not for use in Diagnostic procedures.*