

**PERFORMANCE DATA SHEET**  
2412

**Monoclonal anti-human CD62L (L-selectin)/FITC\***

**mAb name/Clone:** LAM1-116

**Isotype:** Mouse IgG2ak

**Immunogen:** Mouse pre-B cells expressing human L-selectin

**CATALOG#: 261-040**

**QUANTITY: 120 tests**

**VOLUME IN VIAL: 0.2ml**

**WORKING DILUTION: 1:50** (or use 1.6µl of concentrated stock per  $5 \times 10^5$ -cell test)

**INFORMATION:** Human CD62L is an adhesion molecule found on most leukocytes and plays a primary role in mediating initial leukocyte interaction with activated vascular endothelium (1). Human CD62L has signal transduction functions where engagement leads to increased calcium levels and upregulated expression of certain integrins (2). Antibody LAM1-116 recognizes the lectin binding domain of CD62L (2). Antibody LAM1-116 blocks CD62L function and induces expression of beta-1 and beta-2 integrins (1).

**References:** (1). T.A. Springer, (1995) *Annu Rev Physiol* 57: 827-872. (2). D.A. Steeber, et al, (1997) *J Immunol* 159: 952-963. (3). *Leukocyte Typing VI* (T. Kishimoto, et al, eds.) Garland Publishing, Inc., New York (1997) p. 420-424.

**STORAGE CONDITIONS:** Store at 2 - 5°C. Freeze/Thawing is not recommended. Protect from light.

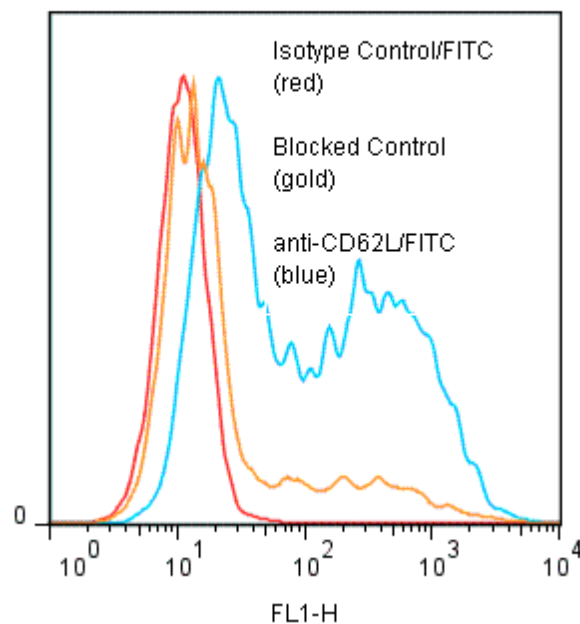
**PRODUCT STABILITY:** Product should retain activity for at least 12 months after shipping date when stored as recommended. Ship Date: \_\_\_\_\_

**BUFFER:** 50 mM Sodium Phosphate pH 7.5, 100 mM Potassium Chloride, 150mM NaCl, 5% Glycerol, 0.2% BSA, 0.04% NaN<sub>3</sub> (as a preservative).

**PRODUCTION:** Protein A purified antibody from tissue culture supernatant was reacted with FITC. Unconjugated FITC was separated from antibody/FITC conjugate by desalting column. The antibody/FITC conjugate is at **0.5 mg/ml** with a Fluorescein: antibody molar ratio of 13.8.

**PERFORMANCE:** Five  $\times 10^5$  cultured **Raji** cells were washed and incubated 45 minutes on ice with 80 µl of anti-CD62L/FITC at a **1:50** dilution factor (10 µg/ml). Cells were washed three times, fixed and analyzed by FACS. Cells stained positive with a mean shift of **1.24** log<sub>10</sub> fluorescent units when compared to a Mouse IgG2a/FITC negative control (Catalog #281-040) at a similar concentration. Binding was blocked when cells were pre incubated 10 minutes with 20 µl of 0.5 mg/ml anti-CD62L antibody (Catalog #261-020).

**Binding of anti-CD62L/FITC to human Raji cells**



**\*Research use only. Not for use in Diagnostic procedures.**