

PERFORMANCE DATA SHEET

2732

Monoclonal anti-human CD244(2B4)/FITC*

mAb name/Clone: ANC2B4 / 3B12

Isotype: Mouse IgG1k

Immunogen: Recombinant soluble CD244

CATALOG#: 259-040

QUANTITY: 120 tests

VOLUME IN VIAL: 0.2ml

WORKING DILUTION: 1:50 (or use 1.6µl of concentrated stock per 5 x 10⁵-cell test)

INFORMATION: CD244 (2B4, SLAMF4) is a 66 kD member of the CD2/SLAM related receptor family (SRR). It is expressed on NK (3), Tcell subsets, monocytes and eosinophils(4). It is expressed at high levels on Leukemia initiating cells, and plays a role in their proliferative potential (5). In mice there are two transcription variants, a long form and a short form of CD244 each of which have distinct signaling properties. In humans, only the long form is expressed. Decreased CD244 expression on monocytes of SLE patients correlated (negatively) with autoantibody titer(2). CD244 mediated function in immune response can vary greatly dependant on the context of its ligation. Antibody ANC2B4/3B12 binds to recombinant CD244-mulg (cat #544-020) in EIA, and to cell surface CD244 on human PBL in FACS. ANC2B4/3B12 binds to a CD244 epitope that is distinct from the binding sites of clone ANC244.8 (cat #239-020) and clone C1.7.

References: 1) Boles KS, Mathew PA, et al. (1999) *Tissue Antigens* 54(1): 27-34. 2) Mak A, AM Fairhurst, et al. (2017) *Clinical Rheumatology* 37(3): 811-816. doi.org/10.1007/s10067-017-3698-2. 3) Vacca P, MC Mingarri, et al. (2006) *Blood* 108: 4078-4085. 4) Munitz A, Levi-Schaffer F, et al. (2005) *J Immunol* 174(1): 110-118. 5) Zhang F, Zheng J, et al. (2017) *Haematologica* Doi: 10.3324/haematol.2016.151555.

STORAGE CONDITIONS: Store at 2 - 5°C. Freeze/Thawing is not recommended. Protect from light.

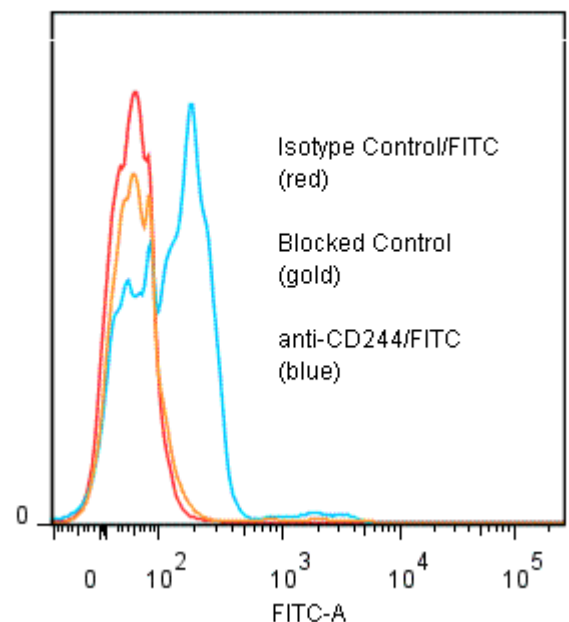
PRODUCT STABILITY: Product should retain activity for at least 12 months after shipping date when stored as recommended. Ship Date: _____

BUFFER: 50 mM Sodium Phosphate pH 7.5, 100 mM Potassium Chloride, 150mM NaCl, 5% Glycerol, 0.2% BSA, 0.04% NaN₃ (as a preservative).

PRODUCTION: Protein A purified antibody from tissue culture supernatant was reacted with FITC. Unconjugated FITC was separated from antibody/FITC conjugate by desalting column. The antibody/FITC conjugate is at 0.5 mg/ml with a Fluorescein/IgG molar ratio of 7.5.

PERFORMANCE: Five x 10⁵ ficoll prepared peripheral blood mononuclear cells were washed and pre incubated 10 minutes with 20µl of 250 µg/ml human IgG (to block non specific binding), after which they were incubated 45 minutes on ice with 80 µl of anti-CD244/FITC at a 1:50 dilution factor (10µg/ml). Cells were washed three times, fixed and analyzed by FACS. A 46% sub population of the cells stained positive with a mean shift of 1.52 log₁₀ fluorescent units when compared to a Mouse IgG1/FITC negative control (Catalog #278-040). Binding was blocked when cells were pre incubated 10 minutes with 20 ml of 0.5 mg/ml anti-CD3 antibody (Catalog #144-020).

Binding of anti-CD244(clone ANC2B4/3B12)/FITC to human PBL



***Research Use Only. Not for use in Diagnostic procedures.**