

PERFORMANCE DATA SHEET

2714

Monoclonal anti-human CD244(2B4) *

mAb name/Clone: ANC2B4 / 3B12

Isotype: Mouse IgG1k

Immunogen: Recombinant soluble CD244

CATALOG#: 259-020

QUANTITY: 100 µg

CONCENTRATION: 1.0 mg/ml

INFORMATION: CD244 (2B4, SLAMF4) is a 66 kD member of the CD2/SLAM related receptor family (SRR). It is expressed on NK (3), Tcell subsets, monocytes and eosinophils(4). It is expressed at high levels on Leukemia initiating cells, and plays a role in their proliferative potential (5). In mice there are two transcription variants, a long form and a short form of CD244 each of which have distinct signaling properties. In humans, only the long form is expressed. Decreased CD244 expression on monocytes of SLE patients correlated (negatively) with autoantibody titer(2). CD244 mediated function in immune response can vary greatly dependant on the context of its ligation.

Antibody ANC2B4/3B12 binds to recombinant CD244-muIg (cat #544-020) in EIA, and to cell surface CD244 on human PBL in FACS. ANC2B4/3B12 binds to a CD244 epitope that is distinct from the binding sites of clone ANC244.8 (cat #239-020) and clone C1.7.

References: 1) Boles KS, Mathew PA, et al. (1999) *Tissue Antigens* 54(1): 27-34. 2) Mak A, AM Fairhurst, et al. (2017) *Clinical Rheumatology* 37(3): 811-816. doi.org/10.1007/s10067-017-3698-2. 3) Vacca P, MC Mingarri, et al. (2006) *Blood* 108: 4078-4085. 4) Munitz A, Levi-Schaffer F, et al. (2005) *J Immunol* 174(1): 110-118. 5) Zhang F, Zheng J, et al. (2017) *Haematologica* Doi: 10.3324/haematol.2016.151555.

STORAGE CONDITIONS: Store at 2 - 5°C. Freeze/Thawing is not recommended.

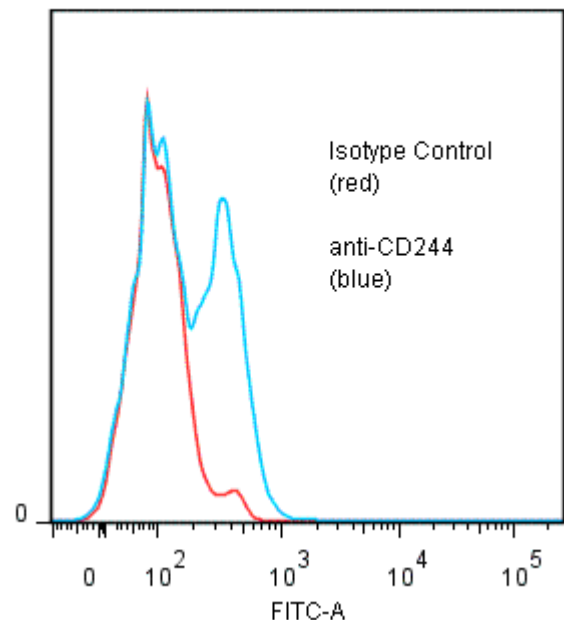
PRODUCT STABILITY: Product should retain activity for at least 12 months after shipping date when stored as recommended. Ship Date: _____

BUFFER: 50 mM Sodium Phosphate pH 7.5, 100 mM Potassium Chloride, 150mM NaCl, 0.5 mg/ml Gentamicin sulfate (as a preservative).

PRODUCTION: Antibody was Protein A purified from (low FBS containing) tissue culture supernatant. Purity was >95% Immunoglobulin by SDS-PAGE and contains less than 1% Bovine Immunoglobulin. Product was 0.2 um filtered and vialled under aseptic conditions.

PERFORMANCE: Five x 10⁵ ficoll prepared human PBMC were washed and incubated 45 minutes on ice with 80 µl of anti-CD244 (clone ANC2B4/3B12) antibody at 10 µg/ml. Cells were washed twice and incubated with 2° reagent Goat anti-Mouse IgG/FITC (Catalog #232-011), after which they were washed three times, fixed and analyzed by FACS using a lymphocyte gate. A net 40% sub population of cells stained positive with a mean shift of 0.53 log₁₀ fluorescent units when compared to a Mouse IgG1 negative control (Catalog #278-010).

Binding of anti-CD244 (ANC244.3/3B12) +GAM/FITC to human PBL



* **Research Use Only. Not for use in Diagnostic procedures.**