

PERFORMANCE DATA SHEET

2644

Monoclonal anti-human IFN-gamma/FITC*

mAb name/Clone: ANC2E11

Isotype: Mouse IgG1κ

Immunogen: Recombinant human IFN-gamma

CATALOG#: 247-040

QUANTITY: 120 tests

VOLUME IN VIAL: 0.2ml

WORKING DILUTION: 1:50 (or use 1.6ml of concentrated stock per 5 x 10⁵-cell test)

INFORMATION: The cytokine human interferon-gamma (IFN-gamma) is a glycosylated protein that exists as a homodimer of 34 kd in its biologically active form. IFN-gamma is expressed upon activation by TH1 cells CD8⁺ cells and NK cells (2). Secreted IFN-gamma is a potent inhibitor of *in vitro* hematopoiesis and appears to serve as an important regulator of lymphocyte and macrophage function by exerting antiproliferative effects (1). Antibody ANC2E11 binds to recombinant and cellular IFN-gamma in EIA and Flow cytometry.

References: 1) H.A. Young & K.J. Hardy (1995) J Leuk Biol 58:373-381. 2) A. Bilikiau (1996) Adv Immunol 62:61-130. 3) T. Sato, et al (1997) Blood 90:4749-4758.

STORAGE CONDITIONS: Store at 2 - 5°C. Freeze/Thawing is not recommended. **Protect from light.**

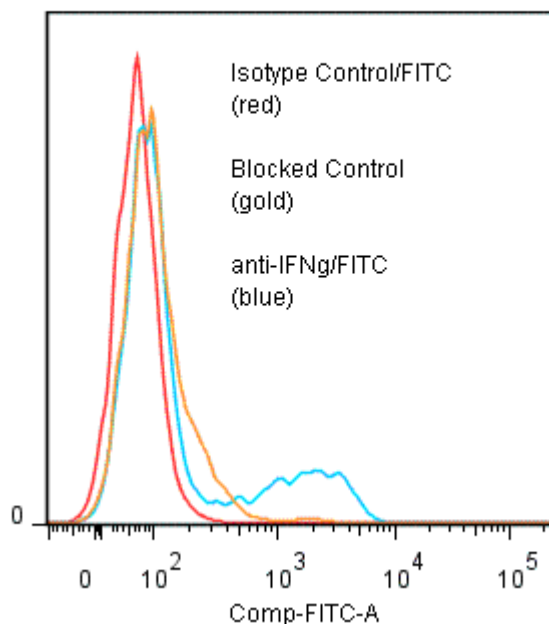
PRODUCT STABILITY: Product should retain activity for at least 12 months after shipping date when stored as recommended. Ship Date: _____

BUFFER: 50 mM Sodium Phosphate pH 7.5, 100 mM Potassium Chloride, 150mM NaCl, 5% Glycerol, 0.2% BSA, 0.04% NaN₃ (as a preservative).

PRODUCTION: Protein A purified antibody from tissue culture supernatant was reacted with FITC. Unconjugated FITC was separated from antibody/FITC conjugate by desalting column. The antibody/FITC conjugate is at 0.1 mg/ml with a Fluorescein/IgG molar ratio of 8.1.

PERFORMANCE: Ficoll prepared human peripheral blood lymphocytes were stimulated 4 hours in the presence of 50 ng/ml PMA, 2 μM ionomycin and 5μM monensin. Cells were then harvested, washed and fixed for 30 min with 2% buffered formaldehyde after which they were washed two times. Fixed cells were permeabilized 10 minutes in a buffer containing 0.05% Saponin. Subsequent reagent incubations and washes were done using this buffer. Five x 10⁵ cells per tube were preincubated 5 minutes with 20 μl of 250 μg/ml human IgG (to block non specific binding), after which they were incubated 45 minutes on ice with 80 μl of anti-IFN-gamma/FITC at a 1:50 dilution factor (2 μg/ml). Cells were washed three times, fixed and analyzed by FACS. A net 21% sub population of the cells stained positive with a mean shift of 1.5 log₁₀ fluorescent units when compared to a Mouse IgG1/FITC negative control (Catalog #278-040). Binding was blocked when cells were pre incubated 10 minutes with 20 μl of 0.5 mg/ml anti-IFN-gamma antibody (Catalog #247-020).

Binding of anti-IFNg/FITC to stimulated fixed permeabilized human PBMC



*Research use only. Not for use in Diagnostic procedures.