

## PERFORMANCE DATA SHEET

1817

### *Monoclonal anti-human IL-2/R-PE\**

*mAb name/Clone:* ANC7F7

*Isotype:* Mouse IgG1 $\kappa$

*Immunogen:* Recombinant human IL-2

**CATALOG#:** 245-050

**QUANTITY:** 120 tests

**VOLUME IN VIAL:** 0.2 ml

**WORKING DILUTION:** 1:50 (or use 1.6ul of concentrated stock per  $5 \times 10^5$ -cell test)

**INFORMATION:** The cytokine human interleukin-2 (IL-2) is a 15 kd protein expressed upon activation by peripheral TH1 cells, medullary thymocytes, and a subset of large granular lymphocytes. Secreted IL-2 stimulates proliferation and lymphokine production by T cells, B cells and NK cells.

**References:** 1. S.L. Swain (1991) *Curr Opin Immunol* 3:304-310. 2. A.K. Abbas, et al, (1996) *Nature* 383: 787-793. 3. A. Rebollo, et al, (1996) *Advan Immunol* 63: 127-196.

**STORAGE CONDITIONS:** *Store at 2 - 5°C. Do not freeze! Protect from light.*

**PRODUCT STABILITY:** Product should retain activity for at least 12 months after shipping date when stored as recommended. Ship Date: \_\_\_\_\_

**BUFFER:** 50 mM Sodium Phosphate pH 7.5, 500 mM Potassium Chloride, 150mM NaCl, 15% Glycerol, 0.2% BSA, 0.04% NaN<sub>3</sub> (as a preservative).

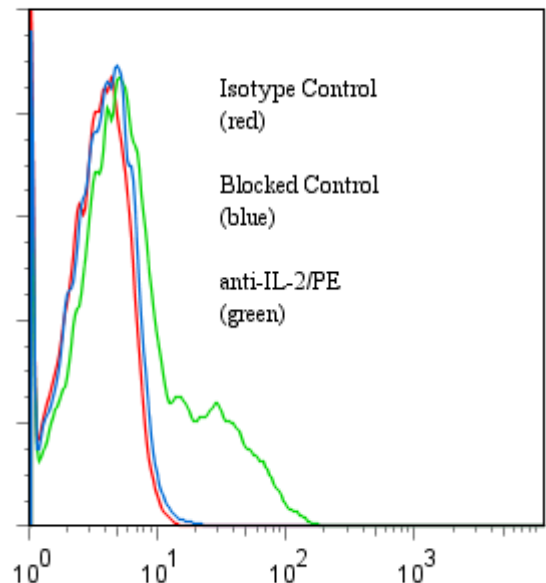
**PRODUCTION:** Protein A purified antibody from tissue culture supernatant was conjugated to R-Phycoerythrin through a sulfo-ester linkage. Unconjugated antibody was removed using size exclusion chromatography. Antibody conjugate is at **0.25 mg/ml** with an A<sub>565</sub>/A<sub>280</sub> ratio of 3.35.

**PERFORMANCE:** Ficoll prepared human **peripheral blood mononuclear cells** were stimulated 4 hours in the presence of 50 ng/ml PMA, 2  $\mu$ M ionomycin and 5  $\mu$ M monensin. Cells were then harvested, washed and fixed for 30 min with 2% buffered formaldehyde after which they were washed two times. Fixed cells were permeabilized 10 minutes in a buffer containing **0.3% Saponin**. Subsequent reagent incubations and washes were done using this buffer. Five  $\times 10^5$  cells per tube were pre incubated 5 minutes with 20  $\mu$ l of 250  $\mu$ g/ml human IgG (to block nonspecific binding), after which they were incubated 45 minutes on ice with 80  $\mu$ l of anti-IL-2/R-PE at a **1:50** dilution (5  $\mu$ g/ml). Cells were washed three times, fixed and analyzed by FACS using a lymphocyte gate. A net **19%** sub population of the cells stained positive with a mean shift of **1.0** log<sub>10</sub> fluorescent units when compared to a Mouse IgG1/R-PE negative control (Catalog #278-050) at a similar concentration. Binding was blocked when cells were pre incubated 10 minutes with 20  $\mu$ l of 0.5 mg/ml anti-IL-2 antibody (Catalog #245-020).

*\*This Product is intended for Laboratory Research use only.*

R-Phycoerythrin (R-PE) is covered under patents: U.S. 4,520,110; European 76,695 and Canadian 1,179,942.

**Binding of anti-IL-2/PE to fixed permeabilized, stimulated human PBMC**



**Ancell Corporation P.O. Box 87 243 Third Street North Bayport, MN 55003-0087 USA**  
**Phone: Toll free 800-374-9523 or 651-439-0835 Fax: 651-439-1940**

**Ancell Corporation P.O. Box 87 243 Third Street North Bayport, MN 55003-0087 USA**  
**Phone: Toll free 800-374-9523 or 651-439-0835 Fax: 651-439-1940**