

PERFORMANCE DATA SHEET

3025

Monoclonal anti-human IL-2/FITC*

mAb name/Clone: ANC7F7

Isotype: Mouse IgG1κ

Immunogen: Recombinant human IL-2

CATALOG#: 245-040

QUANTITY: 120 tests

VOLUME IN VIAL: 0.2 ml

WORKING DILUTION: 1:50 (or use 1.6µl of concentrated stock per 5 x 10⁵-cell test)

INFORMATION: The cytokine human interleukin-2 (IL-2) is a 15 kd protein expressed upon activation by peripheral TH1 cells, medullary thymocytes, and a subset of large granular lymphocytes. Secreted IL-2 N7-48A stimulates proliferation and lymphokine production by T cells, B cells and NK cells.

References: 1. S.L. Swain (1991) Curr Opin Immunol 3:304-310. 2. A.K. Abbas, et al, (1996) Nature 383: 787-793. 3. A. Rebollo, et al, (1996) Advan Immunol 63: 127-196.

STORAGE CONDITIONS: Store at 2 - 5°C. Freeze/Thawing is not recommended. Protect from light.

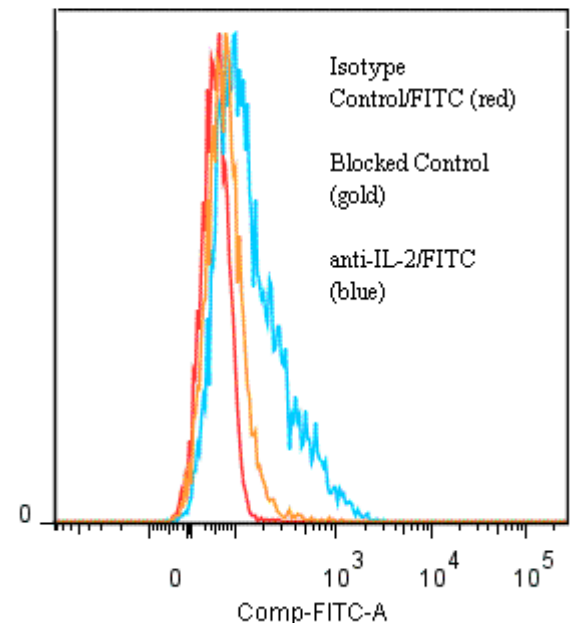
PRODUCT STABILITY: Product should retain activity for at least 12 months after shipping date when stored as recommended. Ship Date: _____

BUFFER: 50 mM Sodium Phosphate pH 7.5, 100 mM Potassium Chloride, 150mM NaCl, 5% Glycerol, 0.2% BSA, 0.04% NaN₃ (as a preservative).

PRODUCTION: Antibody from (low FBS containing) tissue culture supernatant was Protein A purified and reacted with FITC. Unconjugated FITC was removed from conjugate using a desalting column. Antibody conjugate is at **0.1 mg/ml** with a Fluorescein/IgG molar ratio of 13.

PERFORMANCE: Ficoll prepared human **peripheral blood mononuclear cells** were stimulated 4 hours in the presence of 50 ng/ml PMA, 2 µM ionomycin and 5 µM monensin. Cells were then harvested, washed and fixed for 30 min with 2% buffered formaldehyde after which they were washed two times. Fixed cells were permeabilized 10 minutes in a buffer containing **0.3% Saponin**. Subsequent reagent incubations and washes were done using this buffer. Five x 10⁵ cells per tube were preincubated 5 minutes with 20 µl of 250 µg/ml human IgG (to block nonspecific binding), after which they were incubated 45 minutes on ice with 80 µl of anti-IL-2/FITC at a **1:50 dilution (2 µg/ml)**. Cells were washed three times, fixed and analyzed by FACS using a lymphocyte gate. Cells stained positive with a mean shift of **0.62 log₁₀** fluorescent units when compared to a Mouse IgG1κ/FITC negative control (Catalog #278-040). Binding was blocked when cells were pre incubated 10 minutes with 20 µl of 0.5 mg/ml anti-IL-2 antibody (Catalog #245-020).

Binding of anti-IL-2/FITC to fixed permeabilized stimulated human PBMC



* **Research Use Only. Not for use in Diagnostic procedures.**