

# PERFORMANCE DATA SHEET

3321

## Monoclonal anti-human CD75\*

**mAb name/Clone:** LN1

**Isotype:** Mouse IgM

**Immunogen:** PMA stimulated PBL

**CATALOG#:** 228-820

**QUANTITY:** 100 µg

**CONCENTRATION:** 1.0 mg/ml

**INFORMATION:** Human CD75 is an alpha 2, 6-sialylated carbohydrate molecule found mainly on mature B cells and germinal center B cells. CD75 appears to be a ligand for CD22. Antibody LN1 recognizes a molecule of about 53 kd.

**References:** (1) A.L. Epstein, et al, (1984) J Immunol 133:1028-1036. (2) Leukocyte Typing IV (W. Knapp, et al, eds.) Oxford University Press, Oxford, (1989) p. 109-112. (3) Leukocyte Typing VI (T. Kishimoto, et al, eds.) Garland Publishing, Inc., New York (1997) p. 169-171.

**STORAGE CONDITIONS:** Store at 2 - 5°C. Freeze/Thawing is not recommended. Open under aseptic conditions.

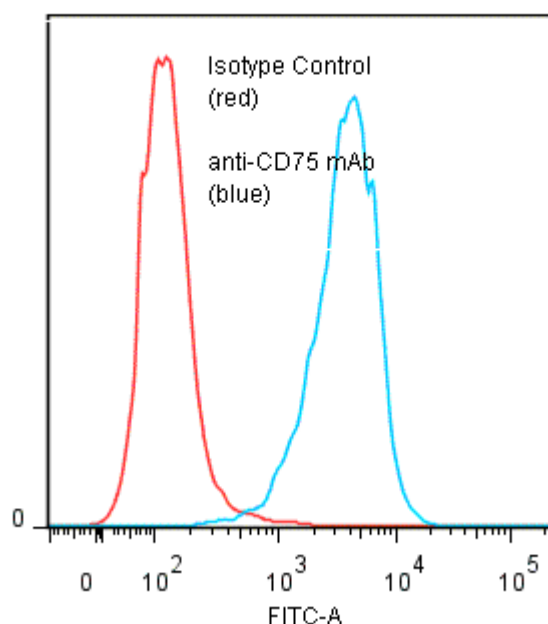
**PRODUCT STABILITY:** Product should retain activity for at least 12 months after shipping date when stored as recommended. Ship Date: \_\_\_\_\_

**BUFFER:** 50 mM Sodium Phosphate pH 7.5, 100 mM Potassium Chloride, 150mM NaCl.

**PRODUCTION:** Antibody was Protein A purified from (low FBS containing) tissue culture supernatant. Purity was >95% Immunoglobulin by SDS-PAGE and contains less than 1% Bovine Immunoglobulin. Product was 0.2 µm filtered and vialled under aseptic conditions.

**PERFORMANCE:** Five x 10<sup>5</sup> cultured human Raji cells were washed and incubated 45 minutes on ice with 80 µl of anti-CD75 antibody at 10 µg/ml. Cells were washed twice and incubated with 2<sup>o</sup> reagent Goat anti-Mouse IgG/FITC (Catalog #232-011, this second step reagent cross reacts well with Mouse IgM). They were washed three times, fixed and analyzed by FACS. Cells stained positive with a mean shift of 1.45 log<sub>10</sub> fluorescent units when compared to a Mouse IgM negative control (Catalog # 290-010).

**Binding of anti-CD75 mAb +GAM/FITC to human Raji cells**



\* Research Use Only. Not for use in Diagnostic procedures.