

PERFORMANCE DATA SHEET

2612

Monoclonal anti-human p53(mutant)/FITC

mAb name/Clone: PAb240

Isotype: Mouse IgG1κ

Immunogen: Murine p53 expressed in E. coli

CATALOG#: 227-040

QUANTITY: 120 tests

VOLUME IN VIAL: 0.2ml

WORKING DILUTION: 1:50 (or use 1.6µl of concentrated stock per 5 x 10⁵-cell test)

INFORMATION: Human p53 is a tumor suppressor protein which is mutated in many cancers. p53 expression has been linked to apoptosis caused by DNA-damaging agents and may have a role in cell-mediated cytotoxicity. Antibody PAb240 recognizes mutant p53 epitope 156-214 in cells and denatured wild type p53 in Western Blots.

References: J.V. Gannon, et al, (1990) EMBO J **9**: 1595-1602. C.C. Harris and M. Hollstein (1993) New Engl J Med **329**: 1318-1327. H. Selter & M. Montenarch (1994) Int J Biochem **26**: 145-154. Mahdi, et al, (1995) Biol Cell **84**: 175-185. M.L. Smith and A.J. Fornace, Jr (1996) Am J Pathol **148**: 1019-1022.

STORAGE CONDITIONS: Store at 2 - 5°C. Freeze/Thawing is not recommended. Protect from light.

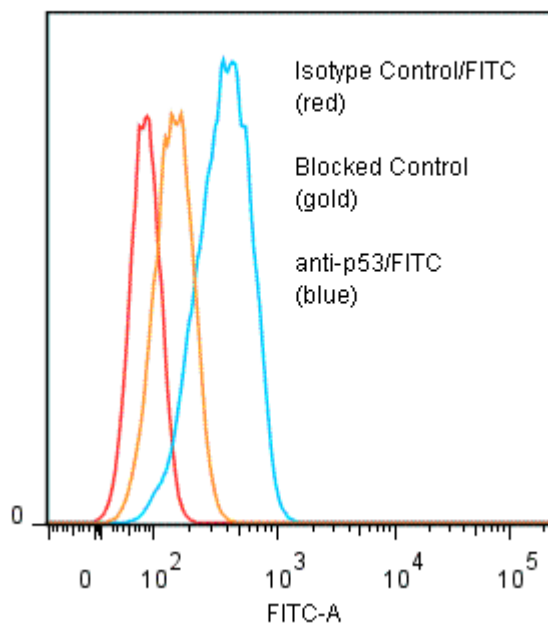
PRODUCT STABILITY: Product should retain activity for at least 12 months after shipping date when stored as recommended. Ship Date: _____

BUFFER: 50 mM Sodium Phosphate pH 7.5, 100 mM Potassium Chloride, 150mM NaCl, 5% Glycerol, 0.2% BSA, 0.04% NaN₃ (as a preservative).

PRODUCTION: Protein A purified antibody from tissue culture supernatant was reacted with FITC. Unconjugated FITC was separated from antibody/FITC conjugate by desalting column. The antibody/FITC conjugate is at **0.25 mg/ml** with a Fluorescein/IgG molar ratio of 6.1.

PERFORMANCE: Cultured Nalm-6 human tumor cells were fixed with 2% buffered formaldehyde after which they were washed two times. Subsequent reagent incubations and wash steps were done using a buffer containing **0.3% Saponin** to permeabilize cells. Five x 10⁵ cells per tube were incubated 45 minutes on ice with 80 µl of anti-p53/FITC at a **1:50** dilution (5 µg/ml). Cells were washed three times, fixed and analyzed by FACS. Cells stained positive with a mean shift of **0.70 log₁₀** fluorescent units when compared to a Mouse IgG1/FITC negative control (Catalog #278-040).

Binding of anti-p53/FITC to fixed permeabilized human CEM cells



* *Research Use Only. Not for use in Diagnostic procedures.*