

PERFORMANCE DATA SHEET

2940

Monoclonal anti-human CD70/APC*

mAb name/Clone: BU69

Isotype: Mouse IgG1

Immunogen: Human WM-1 (Waldenström's macroglobulinemia) cell line

CATALOG#: 222-060

QUANTITY: 120 tests

VOLUME IN VIAL: 0.2 ml

WORKING DILUTION: 1:50 (or use 1.6µl of concentrated stock per 5 x 10⁵-cell test)

INFORMATION: Human CD70 is not present on resting lymphocytes. CD70 is expressed after activation on about 20% of T cells and on about 70% of B cells. CD70 is a ligand for CD27 and it is also a member of the tumor necrosis factor gene family. Antibody BU69 recognizes CD70 molecule of approximately 30 kd. Antibody BU69 inhibits T cell proliferation induced by dendritic cells.

References: R.Q. Hintzen, et al, (1994) J Immunol **152**: 1762-1773. M.R. Bowman, et al, (1994) J Immunol **152**: 1756-1761. Leukocyte Typing V (S.F. Schlossman, et al, eds.) Oxford University Press, Oxford, (1995) p. 1137-1138. K. Agematsu, et al, (1995) J Immunol **154**: 3627-3635..

STORAGE CONDITIONS: Store at 2 - 5°C. Do not freeze! Protect from light.

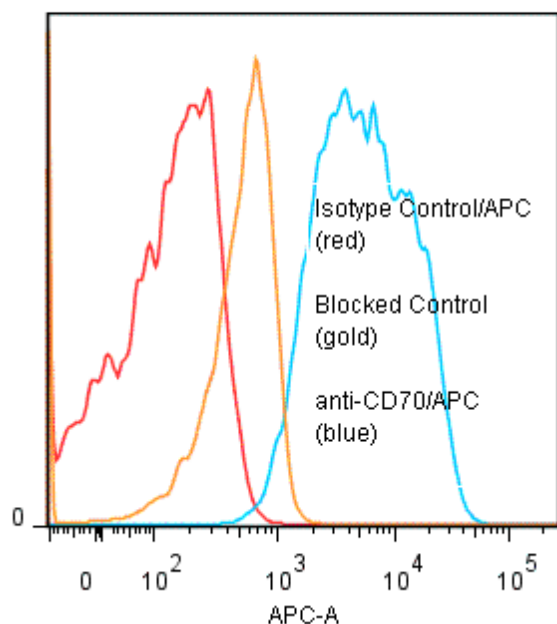
PRODUCT STABILITY: Product should retain activity for at least 12 months after shipping date when stored as recommended. Ship Date: _____

BUFFER: 50 mM Sodium Phosphate pH 7.5, 500 mM Potassium Chloride, 150mM NaCl, 15% Glycerol, 0.2% BSA, 0.04% NaN₃ (as a preservative).

PRODUCTION: Protein A purified antibody from tissue culture supernatant was conjugated to cross-linked Allophycocyanin through a sulfo-ester linkage. Unconjugated antibody was removed using size exclusion chromatography. Antibody conjugate is at approximately 0.5 mg/ml with an A₆₅₀/A₂₈₀ ratio of 1.76.

PERFORMANCE: x 10⁵ cultured Raji human tumor cells were washed and pre incubated 45 minutes on ice with 20 ul of 300 ug/ml human IgG (to reduce non specific binding) after which they were incubated with 80 ul of anti-CD70/APC at a 1:50 dilution (10 µg/ml). Cells were washed three times, fixed and analyzed by FACS. Cells stained positive with a mean shift of 1.70 log₁₀ fluorescent units when compared to a Mouse IgG1a/APC Isotype control (Catalog #278-060). Binding was blocked when cells were pre incubated with 20 ul of 0.5 mg/ml anti-CD70 antibody (Cat# 222-020).

Binding of anti-CD70/APC to human Raji Cells



* **Research Use Only. Not for use in Diagnostic procedures.**