

PERFORMANCE DATA SHEET

2028

Monoclonal anti-human CD70/FITC*

mAb name/Clone: BU69

Isotype: Mouse IgG1

Immunogen: Human WM-1 (Waldenström's macroglobulinemia) cell line

CATALOG#: 222-040

QUANTITY: 120 tests

VOLUME IN VIAL: 0.2ml

WORKING DILUTION: 1:50 (80µl/test)

INFORMATION: Human CD70 is not present on resting lymphocytes. CD70 is expressed after activation on about 20% of T cells and on about 70% of B cells. CD70 is a ligand for CD27 and it is also a member of the tumor necrosis factor gene family. Antibody BU69 recognizes CD70 molecule of approximately 30 kd. Antibody BU69 inhibits T cell proliferation induced by dendritic cells.

References: R.Q. Hintzen, et al, (1994) J Immunol **152**: 1762-1773. M.R. Bowman, et al, (1994) J Immunol **152**: 1756-1761. Leukocyte Typing V (S.F. Schlossman, et al, eds.) Oxford University Press, Oxford, (1995) p. 1137-1138. K. Agematsu, et al, (1995) J Immunol **154**: 3627-3635.

STORAGE CONDITIONS: Store at 2 - 5°C. Freeze/Thawing is not recommended. Protect from light.

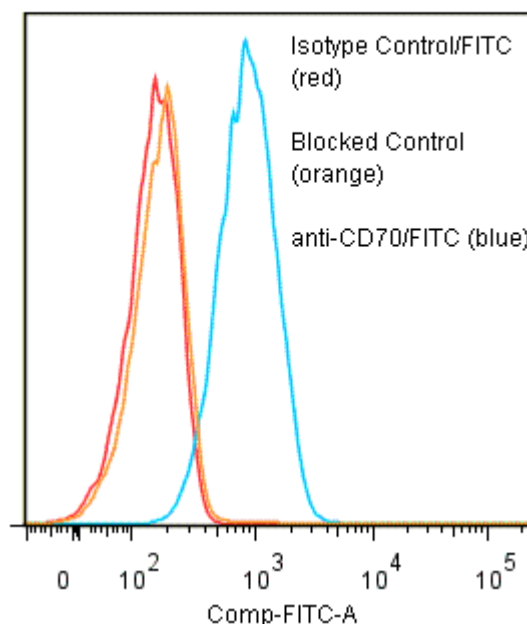
PRODUCT STABILITY: Product should retain activity for at least 12 months after shipping date when stored as recommended. Ship Date: _____

BUFFER: 50 mM Sodium Phosphate pH 7.5, 100 mM Potassium Chloride, 150mM NaCl, 5% Glycerol, 0.2% BSA, 0.04% Na₃N (as a preservative).

PRODUCTION: Protein A purified antibody from tissue culture supernatant was reacted with FITC. Unconjugated FITC was separated from antibody/FITC conjugate by desalting column. The antibody/FITC conjugate is at 1.0 mg/ml with a Fluorescein/IgG molar ratio of 6.7.

PERFORMANCE: Five x 10⁵ cultured human Raji cells were washed and incubated 45 minutes on ice with 80 µl of anti-CD70/FITC at a 1:50 dilution factor (20 µg/ml). Cells were washed three times, fixed and analyzed by FACS. Cells stained positive with a mean shift of 0.85 log₁₀ fluorescent units when compared to a Mouse IgG1/FITC negative control (Catalog # 278-040). Binding was blocked when cells were pre incubated 10 minutes with 20 µl of 0.5 mg/ml unlabeled anti-CD70 antibody (Catalog #222-020).

Binding of anti-CD70/FITC to human Raji cells



* Research Use Only. Not for use in Diagnostic procedures.