

# PERFORMANCE DATA SHEET

2125

## Monoclonal anti-human CD70\*

**mAb name/Clone:** BU69

**Isotype:** Mouse IgG1

**Immunogen:** Human WM-1 (Waldenström's macroglobulinemia) cell line

**CATALOG#:** 222-020

**QUANTITY:** 100 µg

**CONCENTRATION:** 1.0 mg/ml

**INFORMATION:** Human CD70 is not present on resting lymphocytes. CD70 is expressed after activation on about 20% of T cells and on about 70% of B cells. CD70 is a ligand for CD27 and it is also a member of the tumor necrosis factor gene family. Antibody BU69 recognizes CD70 molecule of approximately 30 kd. Antibody BU69 inhibits T cell proliferation induced by dendritic cells.

**References:** R.Q. Hintzen, et al, (1994) J Immunol **152**: 1762-1773. M.R. Bowman, et al, (1994) J Immunol **152**: 1756-1761. Leukocyte Typing V (S.F. Schlossman, et al, eds.) Oxford University Press, Oxford, (1995) p. 1137-1138. K. Agematsu, et al, (1995) J Immunol **154**: 3627-3635.

**STORAGE CONDITIONS:** Store at 2 - 5°C. Freeze/Thawing is not recommended.

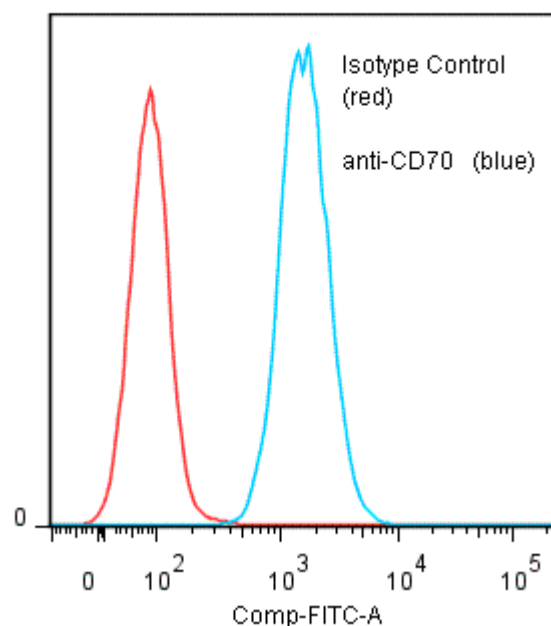
**PRODUCT STABILITY:** Product should retain activity for at least 12 months after shipping date when stored as recommended. Ship Date: \_\_\_\_\_

**BUFFER:** 50 mM Sodium Phosphate pH 7.5, 100 mM Potassium Chloride, 150mM NaCl, 0.5 mg/ml Gentamicin Sulfate (as a preservative).

**PRODUCTION:** Antibody was Protein A purified from (low FBS containing) tissue culture supernatant. Purity was >95% Immunoglobulin by SDS-PAGE and contains less than 1% Bovine Immunoglobulin.

**PERFORMANCE:** Five x 10<sup>5</sup> cultured **Raji** human tumor cells were washed and incubated 45 minutes on ice with 80 µl of anti-CD70 at a concentration of **10 µg/ml**. Cells were washed twice and incubated with 2<sup>o</sup> reagent Goat anti-Mouse IgG/FITC (Catalog #232-011), after which they were washed three times, fixed and analyzed by FACS. Cells stained positive with a mean shift of **1.30** log<sub>10</sub> fluorescent units when compared to a Mouse IgG1 negative control (Catalog #278-010).

**Binding of anti-CD70 mAb +GAM/FITC to human Raji cells**



\* **Research Use Only. Not for use in Diagnostic procedures.**