

PERFORMANCE DATA SHEET

1817

Monoclonal anti-human CD66e*

mAb name/Clone: CB30

Isotype: Mouse IgG1

Immunogen: Human carcinoembryonic antigen

CATALOG#: 218-820 (Preservative-free)

QUANTITY: 100 µg

CONCENTRATION: 1.0 mg/ml

Human CD66e is a heavily glycosylated GPI anchored protein capable of heterophilic and homophilic adhesion and may play a role in metastasis of cancer cells. Soluble CD66e is also known as carcinoembryonic antigen (CEA). Antibody CB30 recognizes cell surface bound CD66e on epithelial cells.

References: 1. Leukocyte Typing VI (T. Kishimoto, et al, eds.) Garland Publishing, Inc., New York (1997) p. 992-1015.

2. A. Gangopadhyay, et al, (1996) Cancer Res 56: 4805-4810.

STORAGE CONDITIONS: Store at 2 - 5°C. Freeze/Thawing is not recommended. *Open under aseptic conditions.*

PRODUCT STABILITY: Product should retain activity for at least 12 months after shipping date when stored as recommended. Ship Date: _____

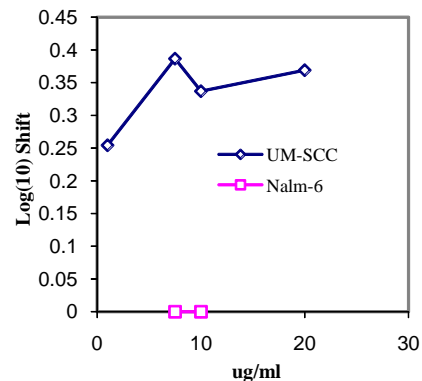
BUFFER: 50 mM Sodium Phosphate pH 7.5, 100 mM Potassium Chloride, 150mM NaCl.

PRODUCTION: Antibody was Protein A purified from (low FBS containing) tissue culture supernatant. Purity was >95% Immunoglobulin by SDS-PAGE and contains less than 1% Bovine Immunoglobulin. Product was 0.2µ sterile filtered and vialled under aseptic conditions.

PRODUCTION: Antibody was Protein A purified from (low FBS containing) tissue culture supernatant. Purity was >95% Immunoglobulin by SDS-PAGE with less than 1% Bovine Immunoglobulin.

PERFORMANCE: Five x 10⁵ cultured UM-SCC cells (squamous cell carcinoma) per tube were washed and pre incubated 5 minutes with 20 µl of 250 µg/ml human IgG (to block non specific binding) after which they were incubated 45 minutes on ice with 80 µl of anti-CD66e antibody at 10 µg/ml. Cells were washed twice and incubated with 2^o reagent Goat anti-Mouse IgG/FITC (Catalog #232-011), after which they were washed three times, fixed and analyzed by FACS. Cells stained positive with a mean shift of 0.33 log₁₀ fluorescent units when compared to a Mouse IgG1 negative control (Catalog #278-010) at a similar concentration.

Binding of anti-CD66e antibody to human cell lines



**This Product is intended for Laboratory Research use only.*

Ancell Corporation P.O. Box 87 243 Third Street North Bayport, MN 55003-0087 USA
Phone: Toll free 800-374-9523 or 651-439-0835 Fax: 651-439-1940