

**PERFORMANCE DATA SHEET**

2025

**Monoclonal anti-human CD63/FITC \*****mAb name/Clone:** AHN16.1/46-4-5**Isotype:** Mouse IgG1**Immunogen:** Human eosinophils**CATALOG#:** 215-040**QUANTITY:** 120 tests**VOLUME IN VIAL:** 0.2 ml**WORKING DILUTION:** 1:50 (or use 1.6µl of concentrated stock per  $5 \times 10^5$ -cell test)

**INFORMATION:** Human CD63 is expressed on activated platelets and also on monocytes and macrophages. CD63 contains four hydrophobic transmembrane regions and is a member of the tetraspan family. CD63 appears to be involved with cell adhesion and associates with VLA-3 and VLA-6 integrins. Antibody 46-4-5 recognizes the CD63 molecule of about 50 kd.

**References:** F. Berditchevski, et al, (1995) J Biol Chem 270: 17784-17790. Leukocyte Typing V (S.F. Schlossman, et al, eds.) Oxford University Press, Oxford, (1995) p. 1352-1364.

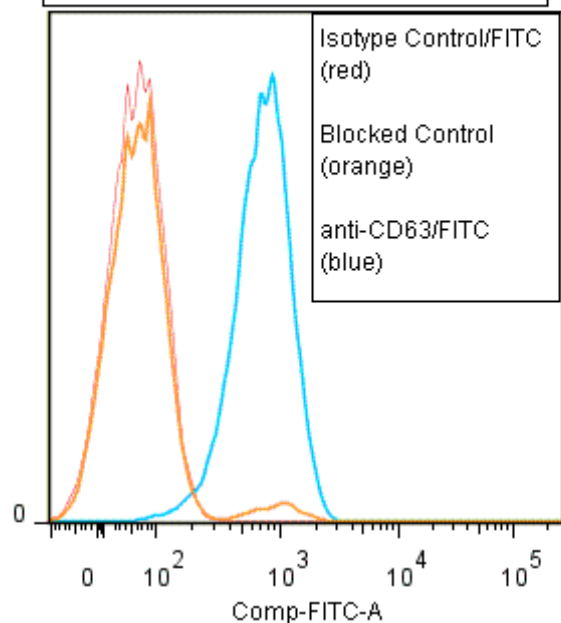
**STORAGE CONDITIONS:** Store at 2 - 5°C. Freeze/Thawing is not recommended. Protect from light.

**PRODUCT STABILITY:** Product should retain activity for at least 12 months after shipping date when stored as recommended. Ship Date: \_\_\_\_\_

**BUFFER:** 50 mM Sodium Phosphate pH 7.5, 100 mM Potassium Chloride, 150mM NaCl, 5% Glycerol, 0.2% BSA, 0.04% Na<sub>3</sub> (as a preservative).

**PRODUCTION:** Protein A purified antibody from tissue culture supernatant was reacted with FITC. Unconjugated FITC was separated from antibody/FITC conjugate by desalting column. The antibody/FITC conjugate is at 0.5 mg/ml with a Fluorescein/IgG molar ratio of 7.4.

**PERFORMANCE:** Five  $\times 10^5$  cultured HPB-MLT cells were washed and pre incubated 5 minutes with 20µl of human IgG at 250 µg/ml (to block non specific binding) after which they were incubated 45 minutes on ice with 80 µl of anti-CD63/FITC at a 1:50 dilution factor (10 µg/ml). They were washed three times, fixed and analyzed by FACS. Cells stained positive with a mean shift of 1.12 log<sub>10</sub> fluorescent units when compared to a Mouse IgG1/FITC negative control (Catalog #278-040) at a similar concentration. Binding was blocked when cells were pre incubated 10 minutes with 20 µl of 0.5 mg/ml anti-CD63 antibody (Catalog #215-020).

**Binding of anti-CD63/FITC to human HPB-MLT cells**

\* **Research Use Only. Not for use in Diagnostic procedures.**