

# PERFORMANCE DATA SHEET

1817

## Monoclonal anti-human CD59(Protectin)/FITC\*

**mAb name/Clone:** BRA-10G

**Isotype:** Mouse IgG1κ

**Immunogen:** Human K562 tumor cells

**CATALOG#:** 211-040

**QUANTITY:** 120 tests

**VOLUME IN VIAL:** 0.2ml

**WORKING DILUTION:** 1:50 (or use 1.6µl of concentrated stock per  $5 \times 10^5$ -cell test)

**INFORMATION:** Human CD59 is a GPI anchored molecule that protects cells from complement-mediated lysis (1). Studies are progressing to determine the regulatory mechanism for CD59 expression (2). Antibody BRA-10G reacts with the 18-22 kd CD59 molecule.

**References:** (1) Leukocyte Typing V (S.F. Schlossman, et al, eds.) Oxford University Press, Oxford (1995) p. 1476-1477. (2) M.H. Holguin, et al, (1996) J Immunol 157: 1659-1668.

**STORAGE CONDITIONS:** Store at 2 - 5°C. Freeze/Thawing is not recommended. Protect from light.

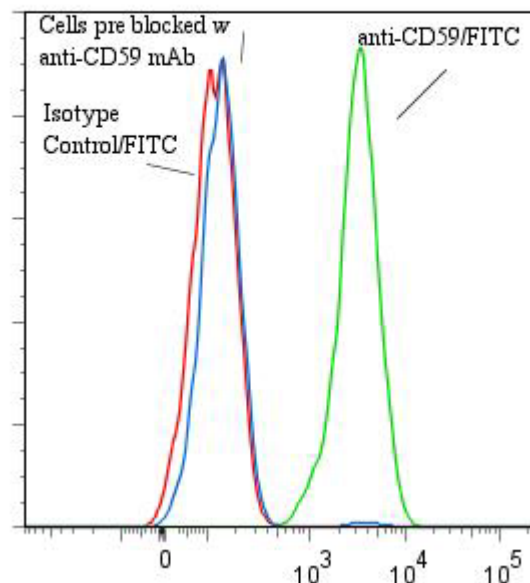
**PRODUCT STABILITY:** Product should retain activity for at least 12 months after shipping date when stored as recommended. Ship Date: \_\_\_\_\_

**BUFFER:** 50 mM Sodium Phosphate pH 7.5, 100 mM Potassium Chloride, 150mM NaCl, 5% Glycerol, 0.2% BSA, 0.04% NaN<sub>3</sub> (as a preservative).

**PRODUCTION:** Protein A purified antibody from tissue culture supernatant was reacted with FITC. Unconjugated FITC was separated from antibody/FITC conjugate by desalting column. The antibody/FITC conjugate is at 0.5 mg/ml with a Fluorescein/IgG molar ratio of 2.7.

**PERFORMANCE:** Five  $\times 10^5$  cultured HPB-MLT cells were washed and incubated 45 minutes on ice with 80 µl of anti-CD59/FITC at a 1:50 dilution factor (10µg/ml). Cells were washed three times, fixed and analyzed by FACS. Cells stained positive with a mean shift of 1.44 log<sub>10</sub> fluorescent units when compared to a Mouse IgG1/FITC negative control (Catalog #278-040). Binding was blocked when cells were pre incubated 10 minutes with 20 µl of 0.5 mg/ml anti-CD59 antibody (Catalog #211-020).

### Binding of anti-CD59/FITC to human HPB-MLT cells



*\*Research use only. Not for use in Diagnostic procedures.*