

PERFORMANCE DATA SHEET

3224

Monoclonal anti-human CD56 (NCAM)/Biotin*

mAb name/Clone: ERIC-1

Isotype: Mouse IgG1 κ

Immunogen: Human retinoblastoma tumor tissue, membrane fraction

CATALOG#: 208-030

QUANTITY: 100 μ g

CONCENTRATION: 1.0 mg/ml

INFORMATION: Human CD56 is an adhesion molecule from the Ig superfamily which is restricted to NK cells in the immune system. It is believed that NK cells form a first line of defense against tumor cells and cells infected with bacteria and viruses. Antibody ERIC-1 recognizes a stem region epitope of the CD56 molecule(4).

References: 1) S.P. Bourne, et al, (1991) J Neuro-Oncol **10**: 111-119. 2) T.L. Whiteside and R.B. Herberman (1994) Clinical & Diagnostic Laboratory Immunology. 3) H. Spits, et al, (1995) Blood **85**: 2654-2670. 4) R. Gerardy-Schahn, M Eckhardt, (1994) Int J Cancer: Supp 8: 38-42.

STORAGE CONDITIONS: Store at 2 - 5°C. *Freeze/thawing not recommended.*

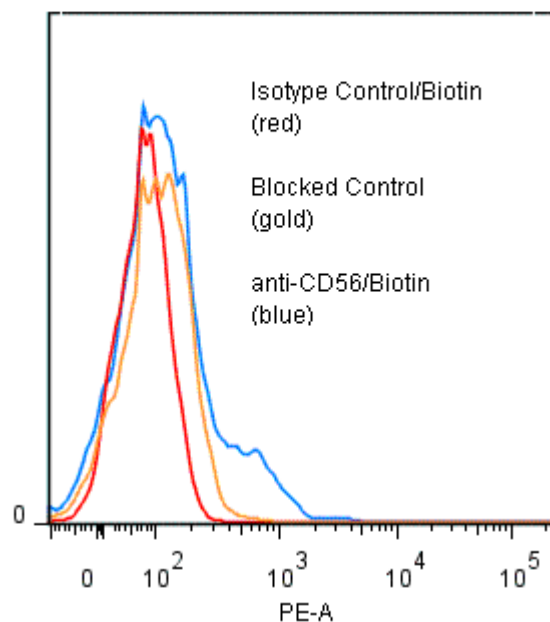
PRODUCT STABILITY: Product should retain activity for at least 12 months after shipping date when stored as recommended. Ship Date:_____

BUFFER: 50 mM Sodium Phosphate pH 7.5, 100 mM Potassium Chloride, 150mM NaCl, 5% Glycerol, 0.2% BSA, 0.04% NaN₃ (as a preservative).

PRODUCTION: Antibody from (low FBS containing) tissue culture supernatant was Protein A purified to >95% mouse immunoglobulin by SDS-PAGE (<1% bovine immunoglobulin), and reacted with NHS-Biotin. Unconjugated Biotin was removed from conjugate using a desalting column.

PERFORMANCE: Five x 10⁵ ficoll prepared human peripheral white blood cells were washed and pre incubated 5 minutes with 20 μ l of 250 μ g/ml human IgG (to block nonspecific binding), after which they were incubated 45 minutes on ice with 80 μ l of anti-CD56/Biotin at a concentration of **20 μ g/ml**. Cells were washed twice and incubated with 2^o reagent Streptavidin/R-Phycoerythrin (Catalog #253-050), after which they were washed three times, fixed and analyzed using by FACS. A net **8.4%** sub population of the cells stained positive with a mean shift of **0.84 log₁₀** fluorescent units when compared to a Mouse IgG1/Biotin negative control (Catalog #278-030). Binding was blocked when cells were pre incubated 10 minutes with 20 μ l of 0.5 mg/ml anti-CD56 antibody (Catalog #208-020).

**Binding of anti-CD56/Biotin
+SA/PE to human PBMC**



**Research Use Only. Not For Use In Diagnostic Procedures.*